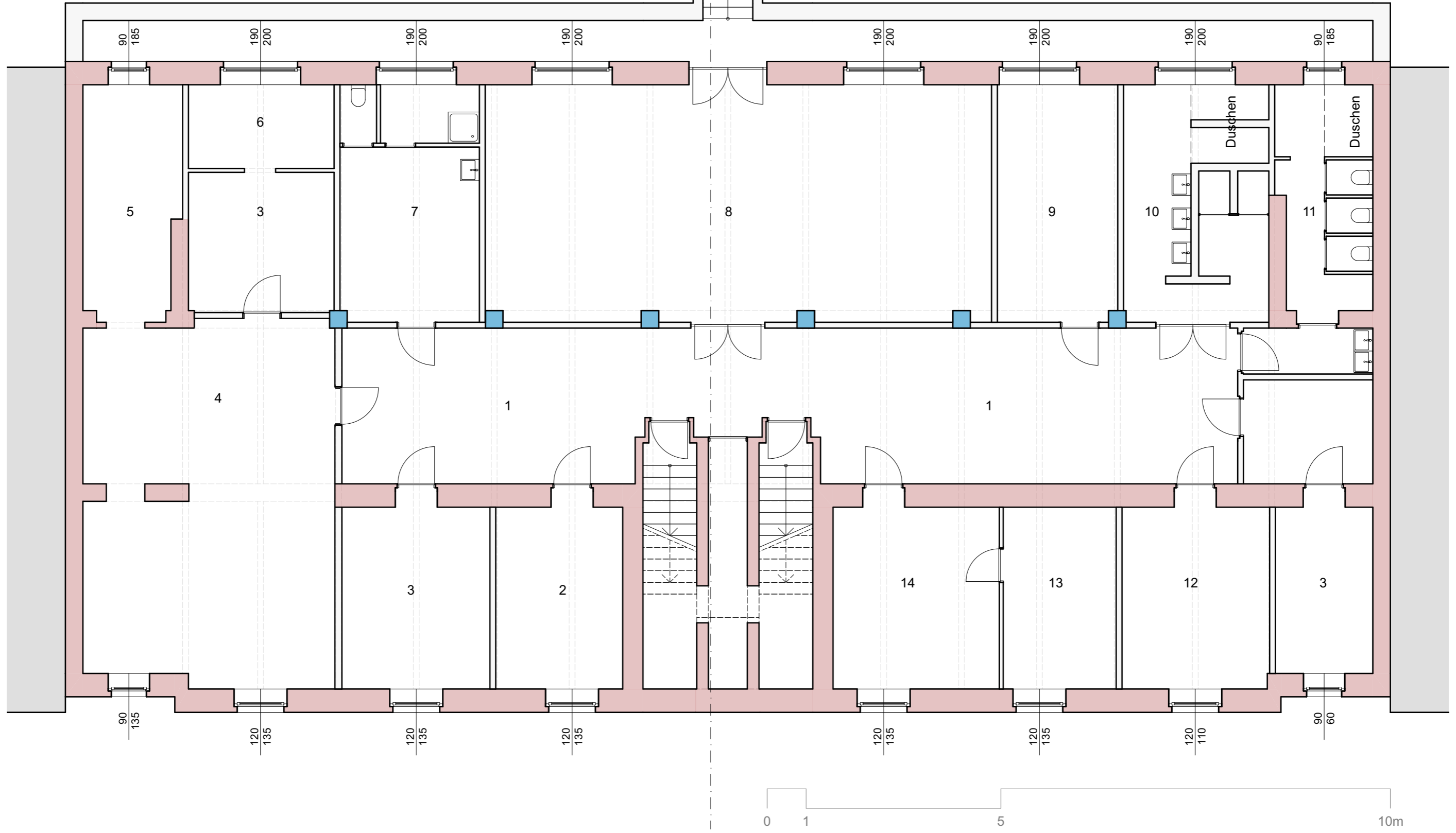


TIEFPARTERRE BASEMENT

- | | | | |
|---------------------|-------------------|----------------------|--------------------------|
| 1. Gang | 8. Turnsaal | 1. Hallway | 8. Gymnasium |
| 2. Büro | 9. Kleiderausgabe | 2. Office | 9. Clothing Distribution |
| 3. Lager | 10. WC / Dusche D | 3. Storage | 10. WC / Shower Women's |
| 4. Küche | 11. WC / Dusche H | 4. Kitchen | 11. WC / Shower Men's |
| 5. (Tief-)Kühlzelle | 12. Heizung | 5. Freezer / Fridge | 12. Heating System |
| 6. Pers. Speisez. | 13. Wäschelager | 6. Staff Dining Room | 13. Linen Storage |
| 7. Bad | 14. Waschküche | 7. Bathroom | 14. Laundry Room |

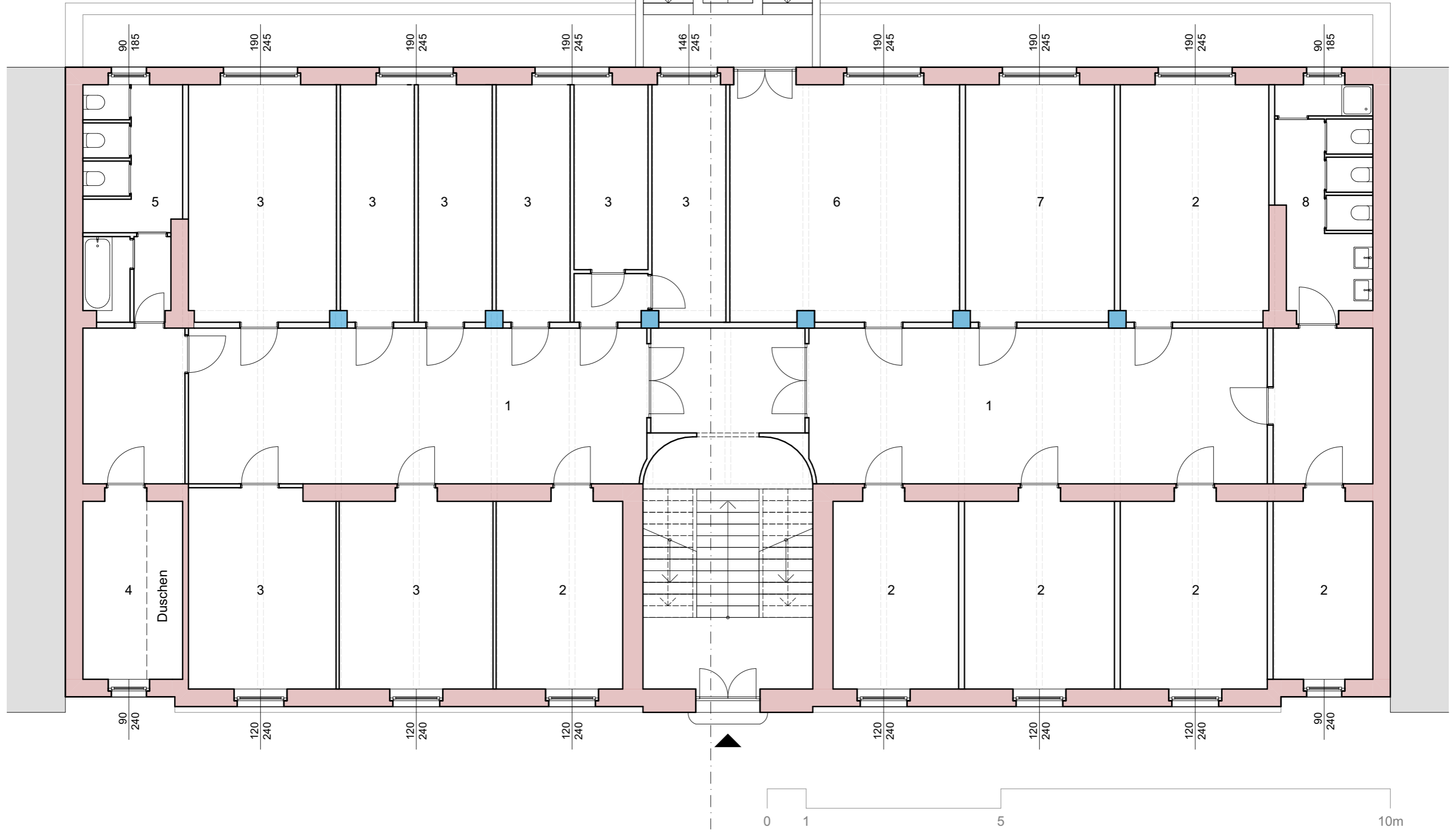
- | | |
|---|---|
|  Ziegelmauerwerk |  brick masonry |
|  Stahlbeton |  reinforced concrete |



HOCHPARTERRE (RAISED) GROUND FLOOR

- | | |
|---------------------|---------------------|
| 1. Gang | 1. Hallway |
| 2. Büro | 2. Office |
| 3. Zimmer | 3. Room |
| 4. Duschen | 4. Showers |
| 5. WC Damen | 5. Women's Restroom |
| 6. Aufenthaltsraum | 6. Lounge |
| 7. Besprechungsraum | 7. Conference Room |
| 8. WC Herren | 8. Men's Restroom |

- | | |
|---|---|
|  Ziegelmauerwerk |  brick masonry |
|  Stahlbeton |  reinforced concrete |



OBERGESCHOSS UPPER FLOOR

- | | |
|---------------|---------------------|
| 1. Gang | 1. Hallway |
| 2. Büro | 2. Office |
| 3. Zimmer | 3. Room |
| 4. WC Damen | 4. Women's Restroom |
| 5. Schlafsaal | 5. Dormitory |
| 6. WC Herren | 6. Men's Restroom |
| 7. Küche | 7. Kitchen |
| 8. Lager | 8. Storage |
| 9. WC | 9. Restroom |
-
- | | |
|---|---|
|  Ziegelmauerwerk |  brick masonry |
|  Stahlbeton |  reinforced concrete |

