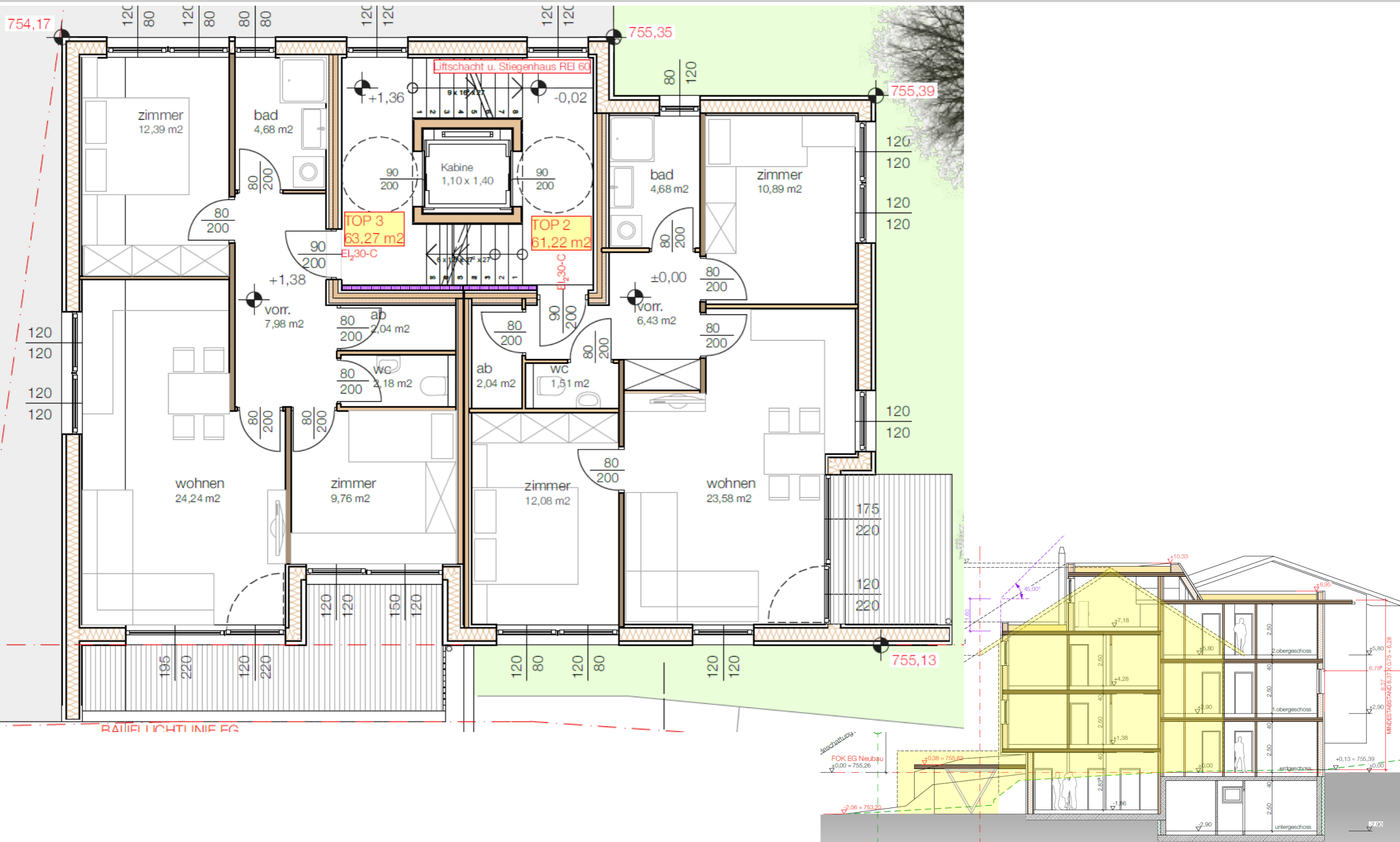


HOLZWOHNBAU RITZENSEESTRASSE

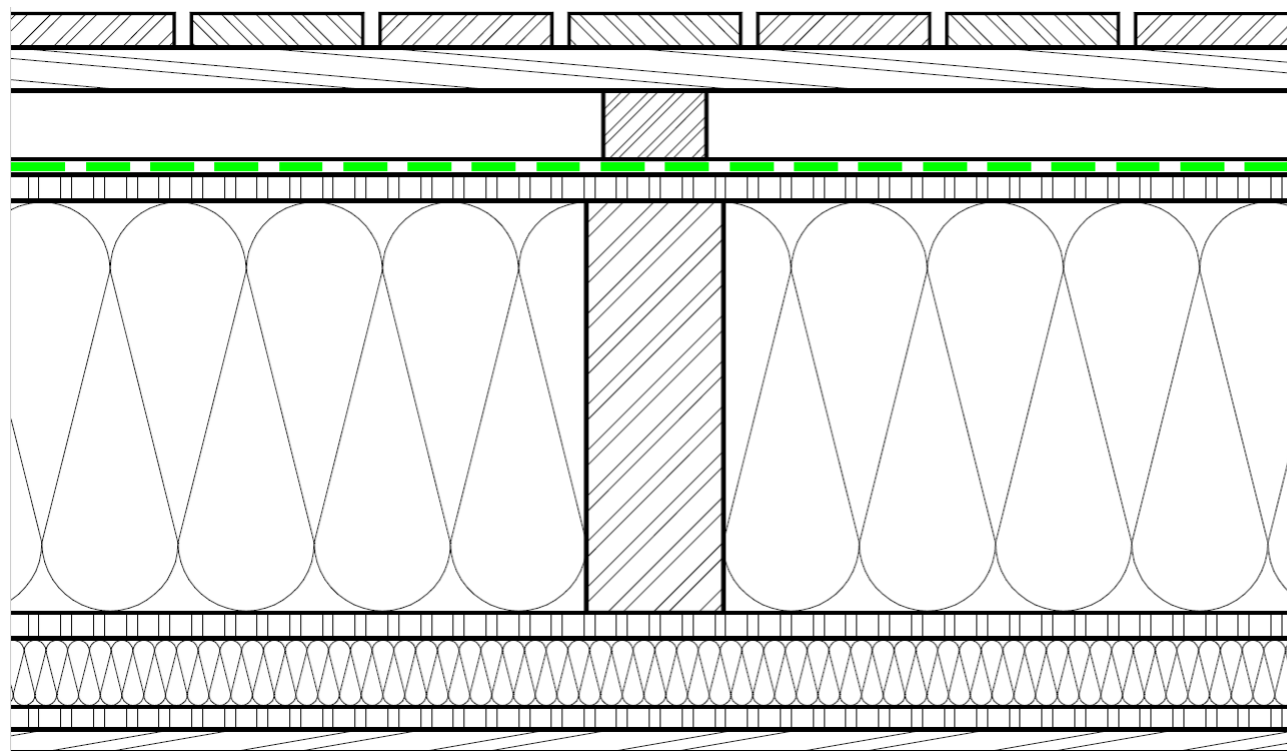






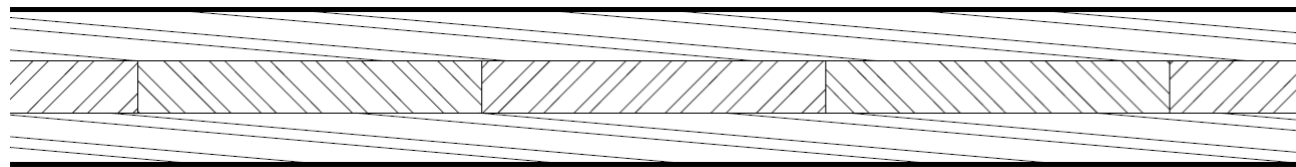


Außenwand



Holzschalung	2,2 cm
Konterlattung	3,0 cm
Hinterlüftung / Lattung	3,0 cm
DHF-Platte	1,25 cm
Mineralfaser /Sparren	24,0 cm
OSB-Platte	1,25 cm
Installationsebene	4,0 cm
OSB-Platte	1,25 cm
Gipskartonplatte	1,25 cm

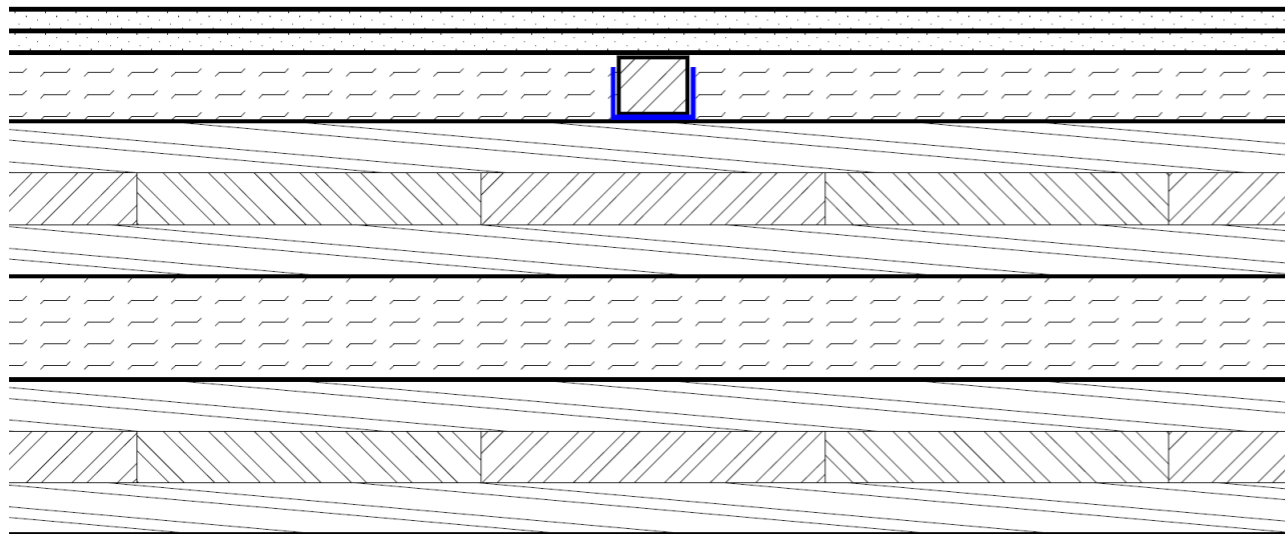
Innenwand



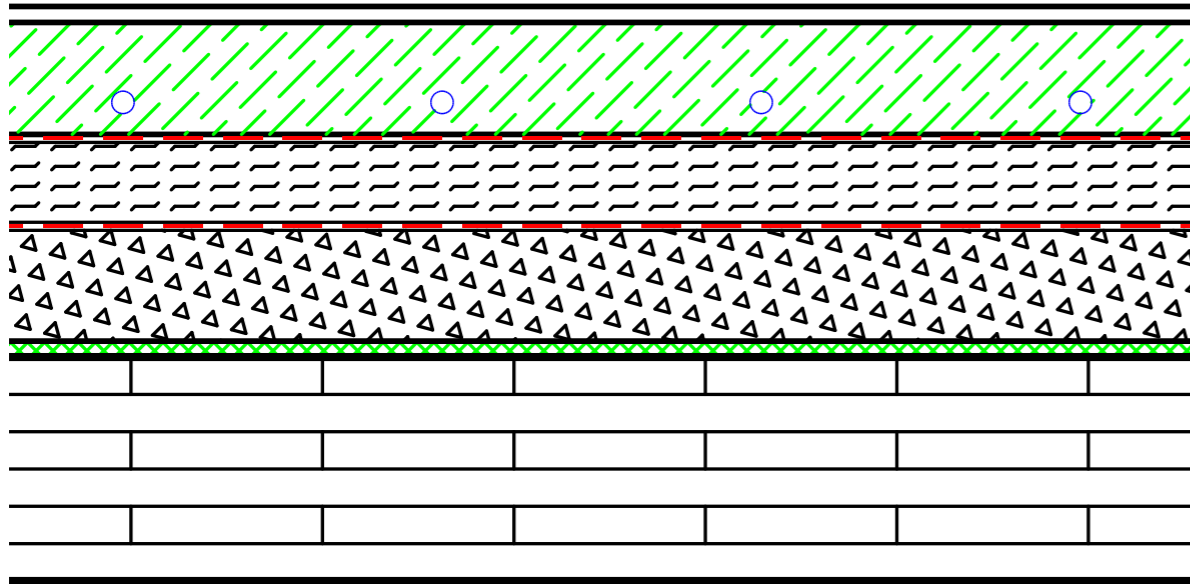
KLH - Massivholzwand

9,5 cm

Wohnungstrennwand

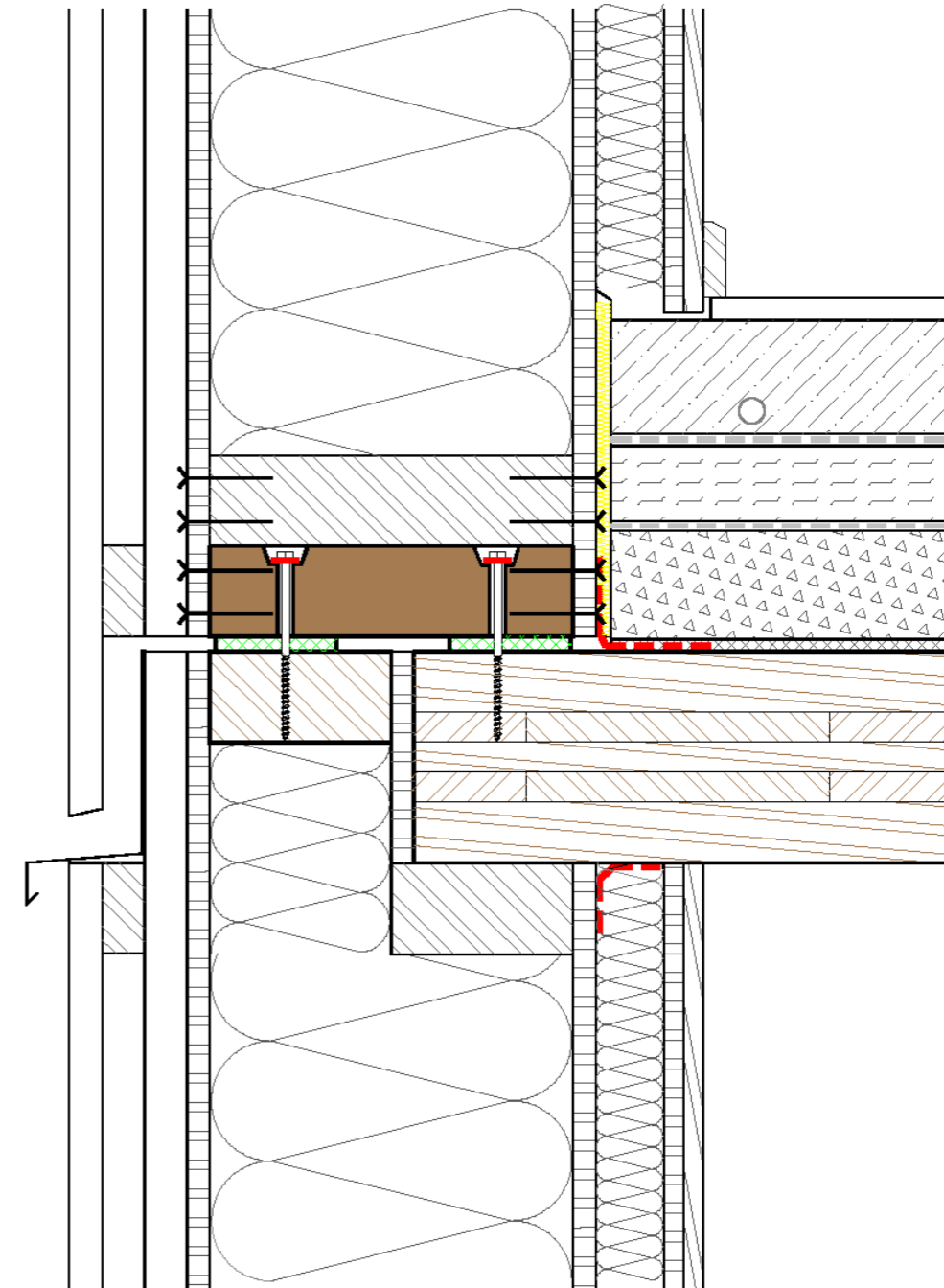
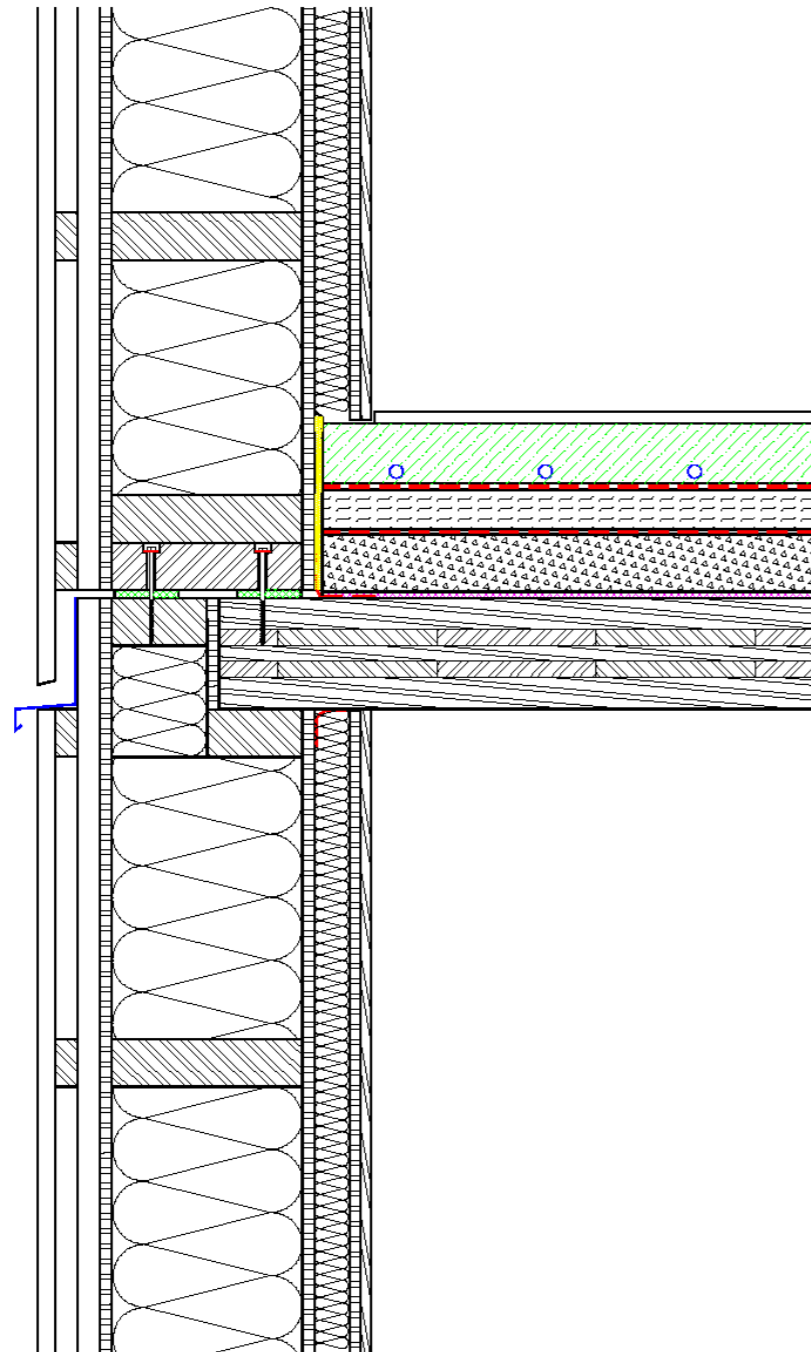


Gipskartonplatte	
1,25 cm	
OSB – Platte	1,25
cm	
Mineralfaser auf Schwingbügel / Lattung	4,0 cm
KLH – Massivholzwand	9,0 cm
Heralan KP-HB	6,0 cm
KLH – Massivholzwand	9,0 cm



Parkett	1,5 cm
Estrichbeton	7,5 cm
System-Dampfsperrfolie	
Trittschalldämmplatte TDPT.....	5,0 cm
PAE-Folie	
Kiesschüttung ungebunden	7,2 cm
① Getzner Acoustic Floor Mat AFM21.....	0,8 cm
KLH Massivholzdecke.....	14,0 cm
② Regupol resist Gummigranulatmatte	0,6 cm
③ Steicotherm.....	2,0 cm

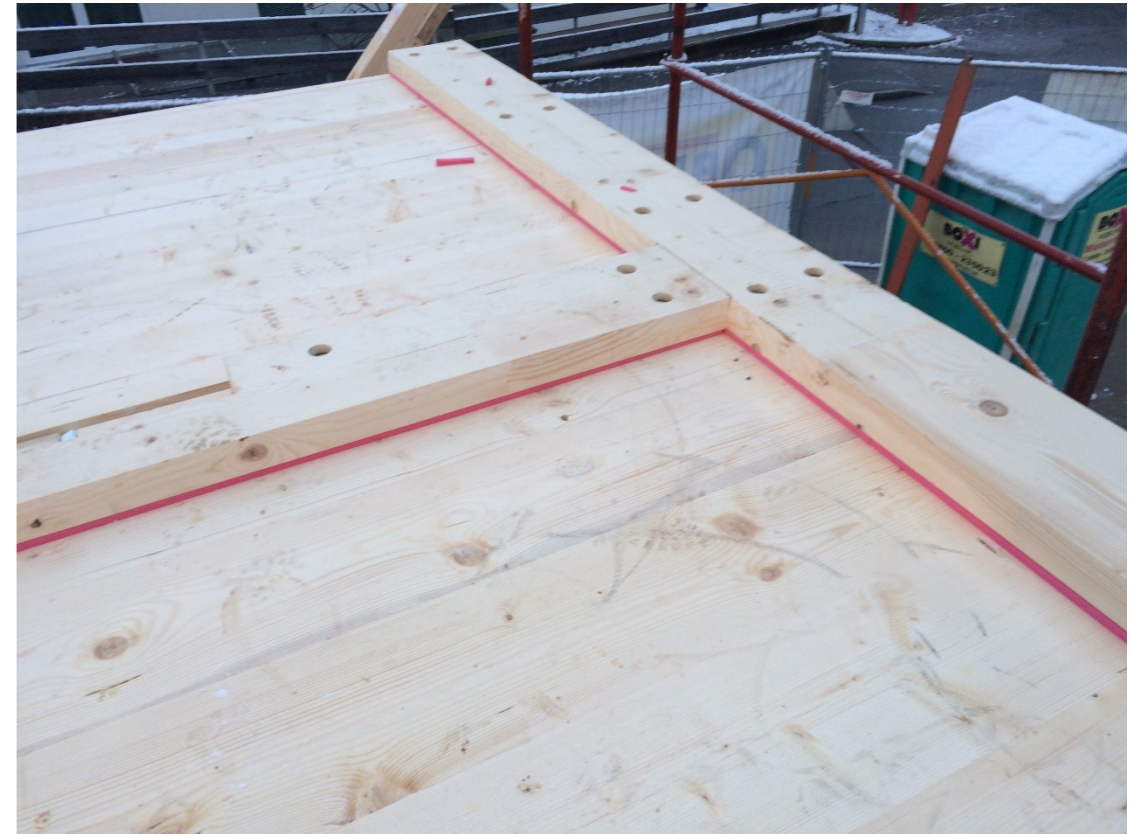


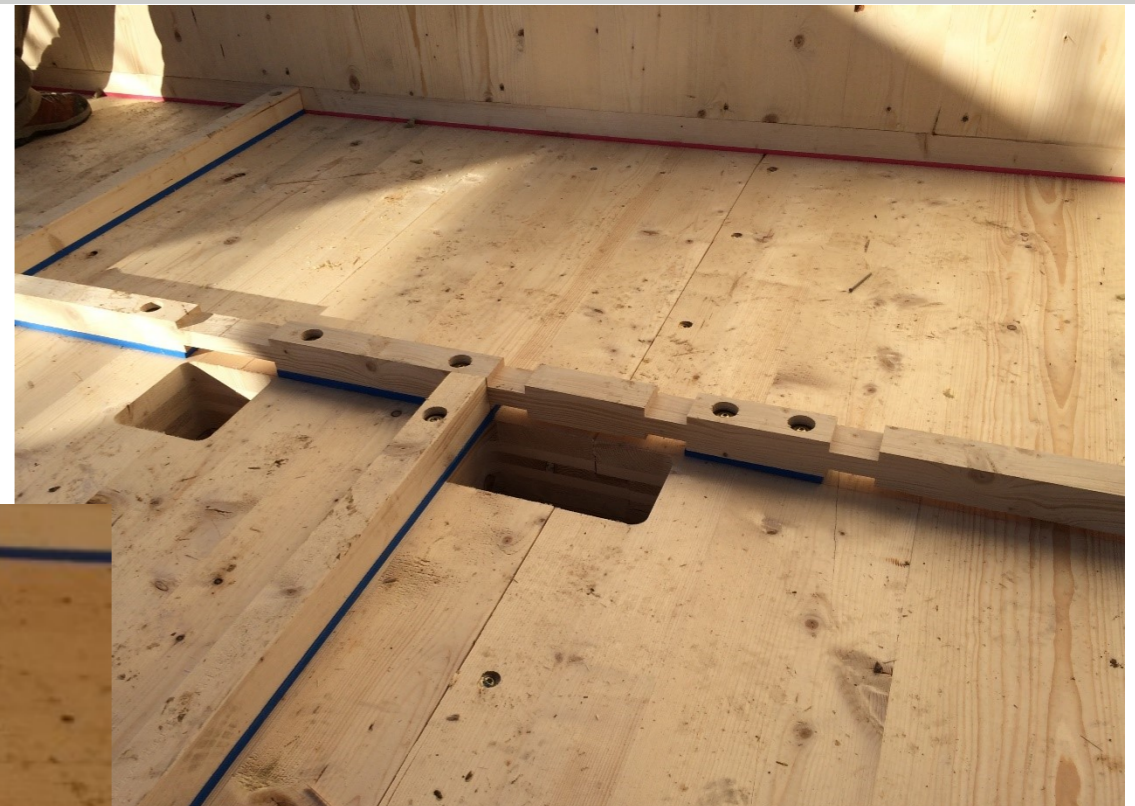






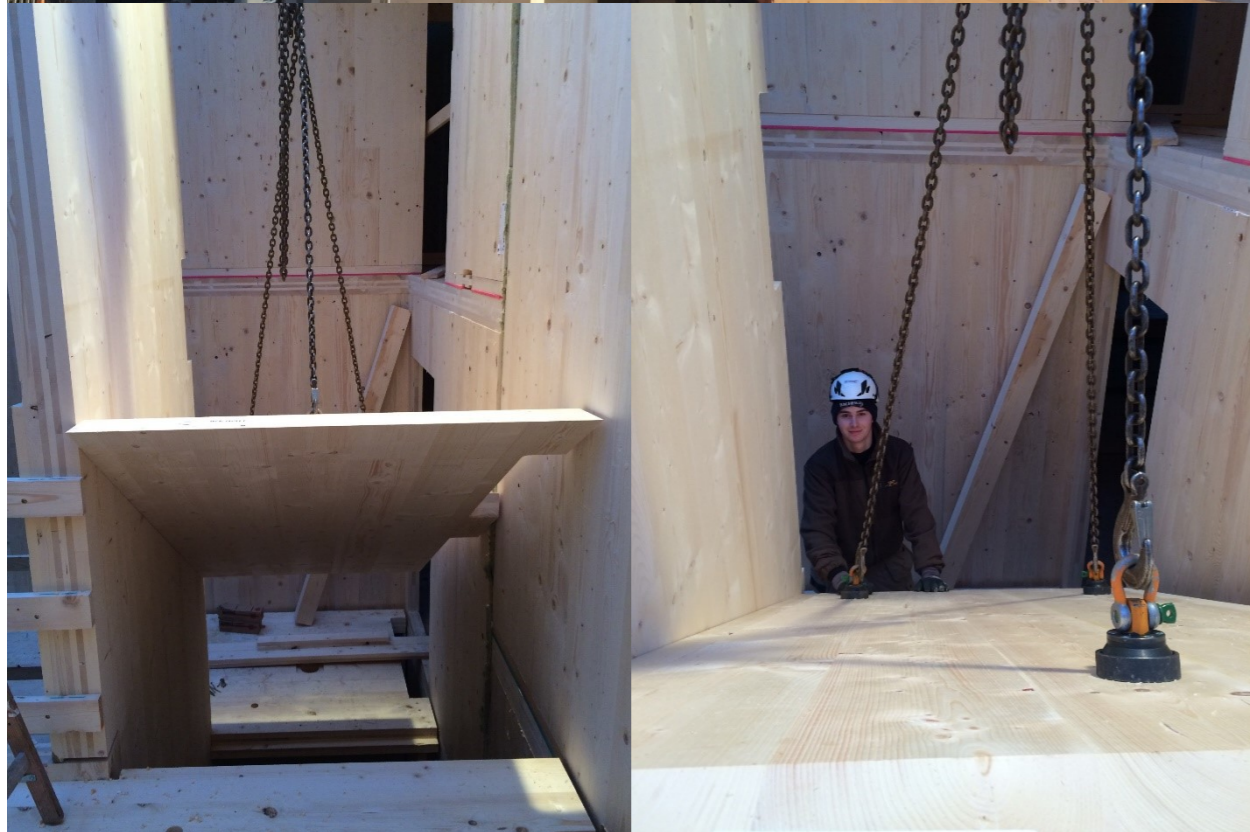
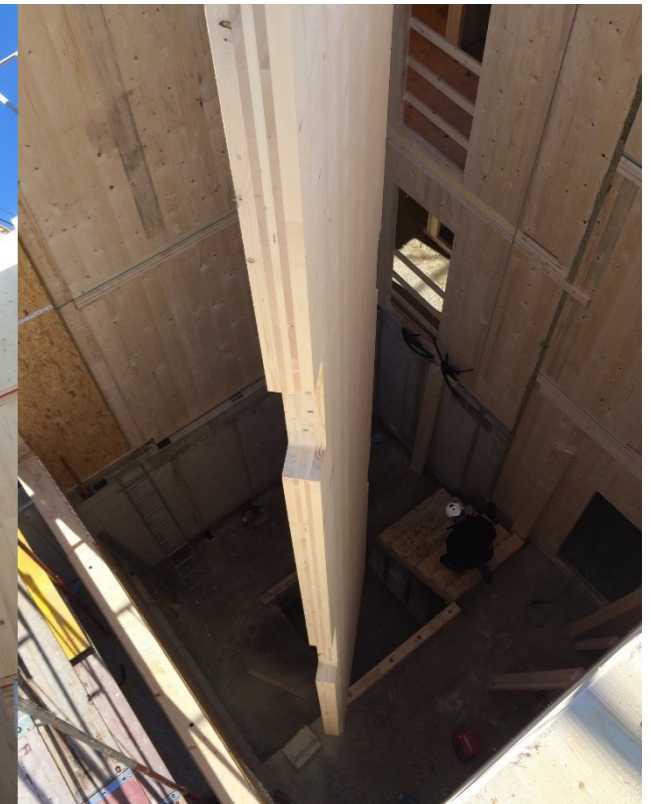














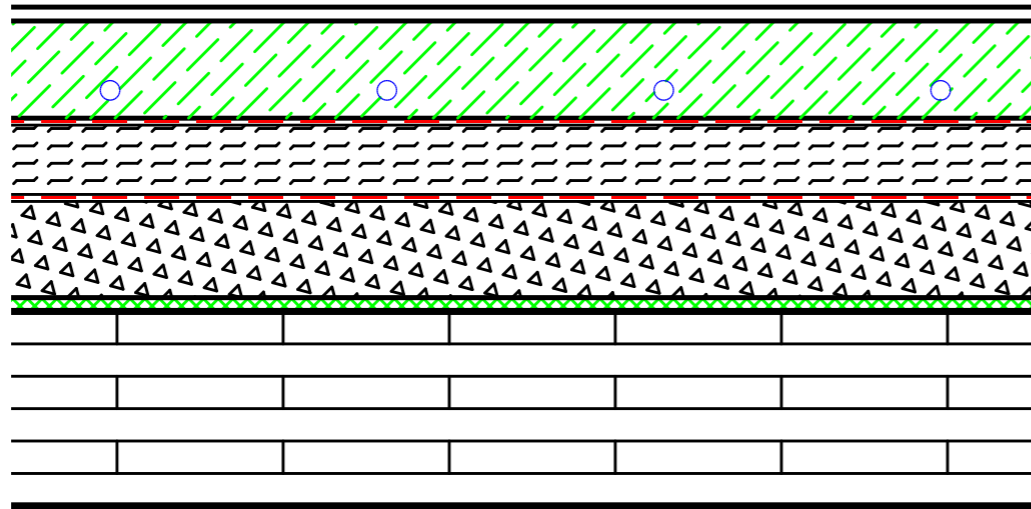




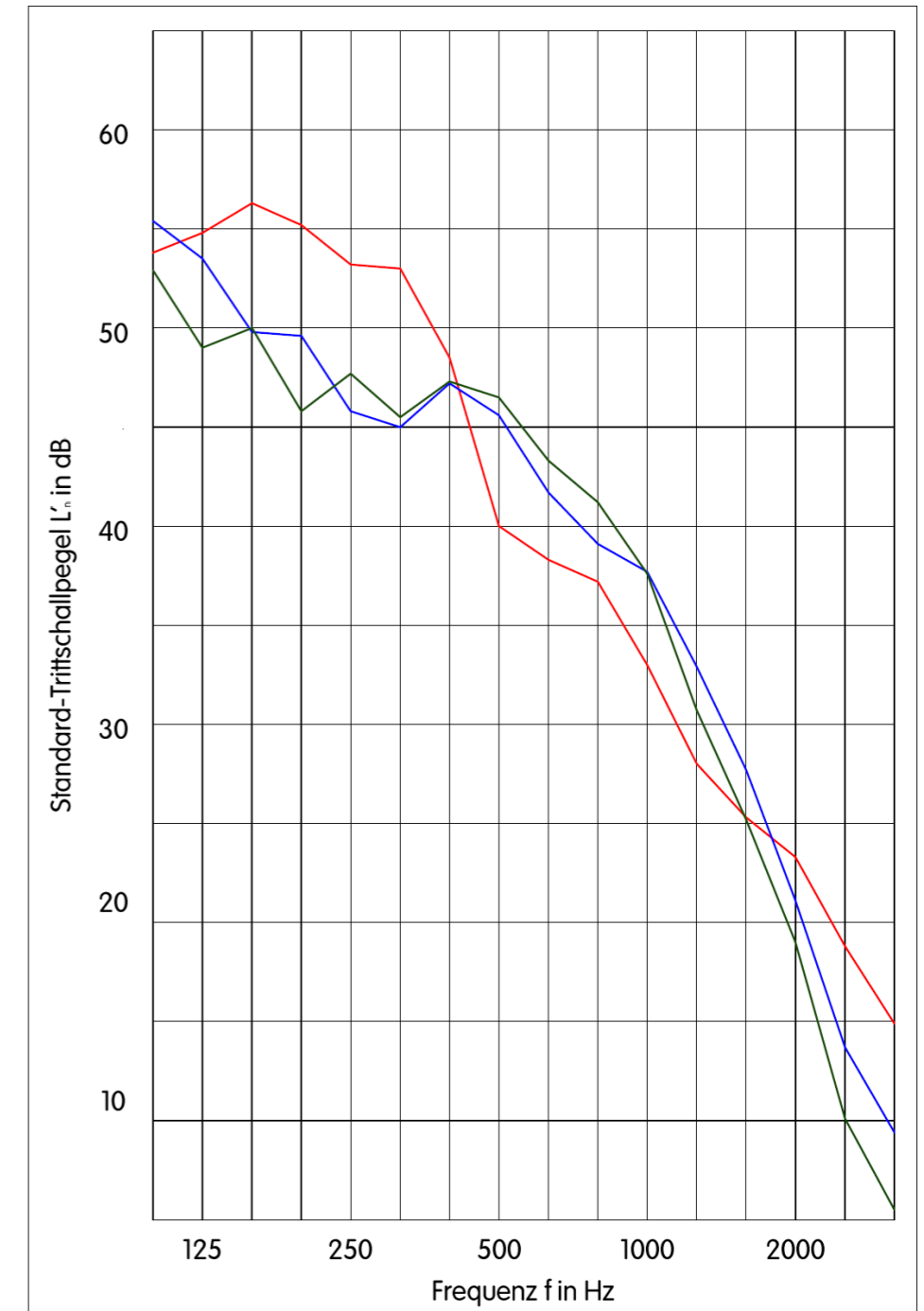


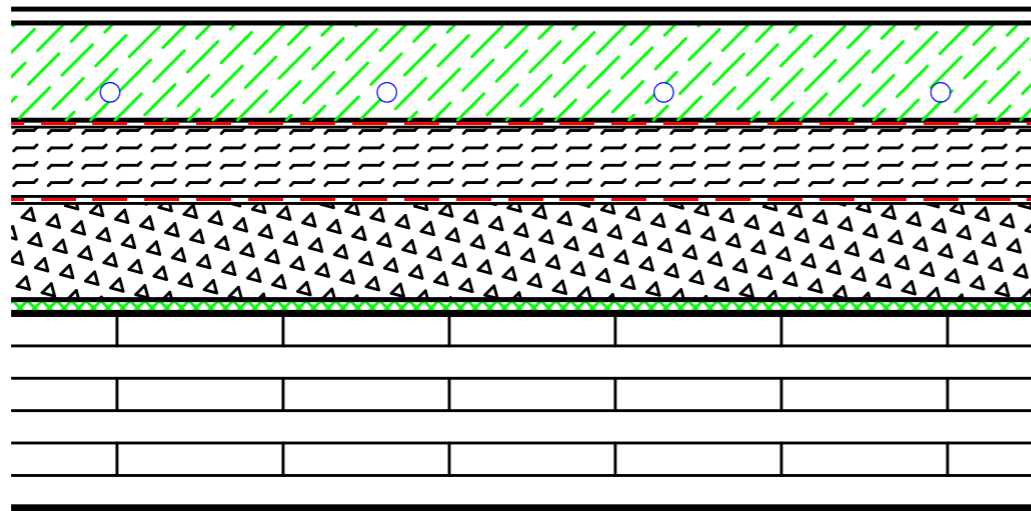




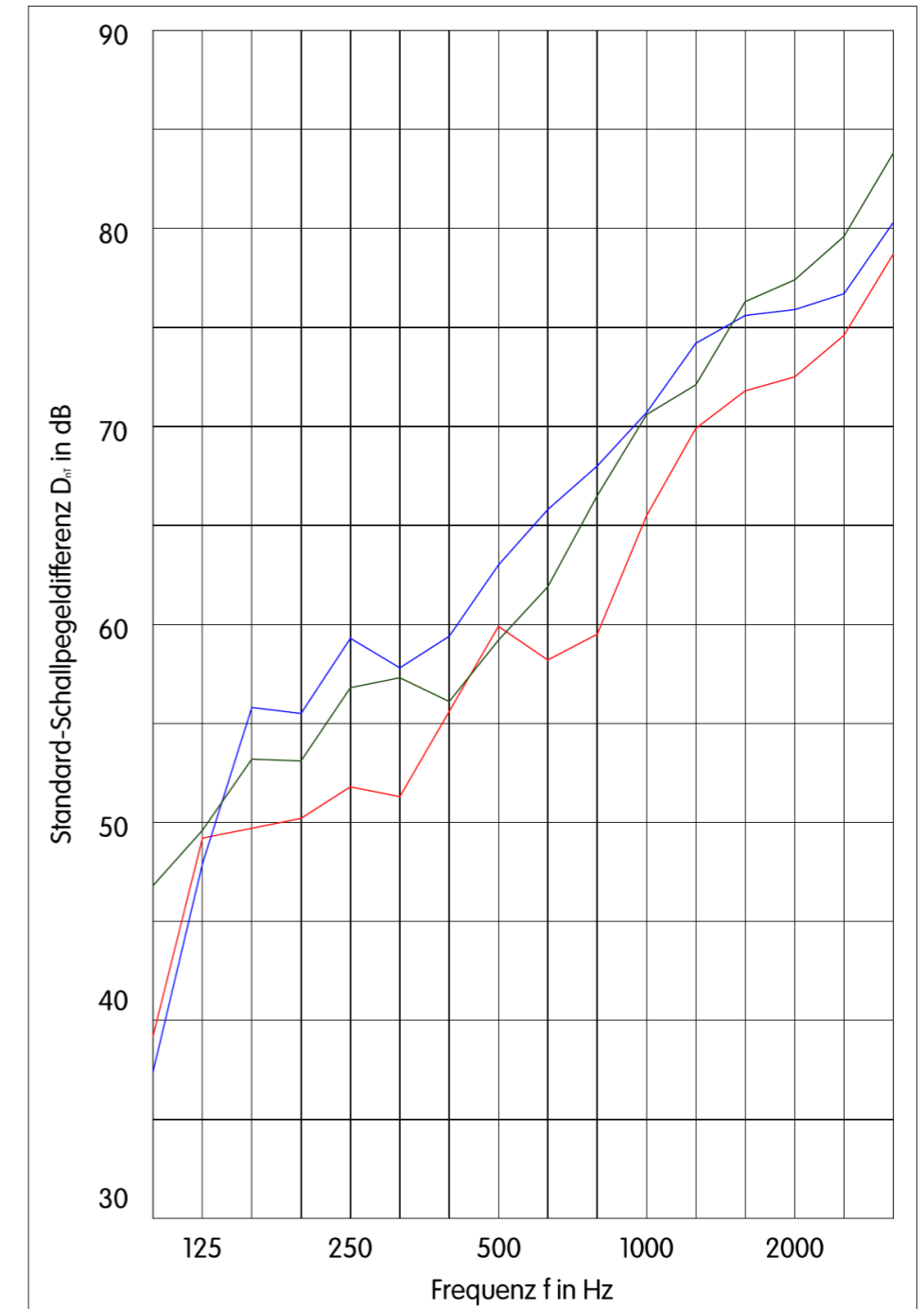


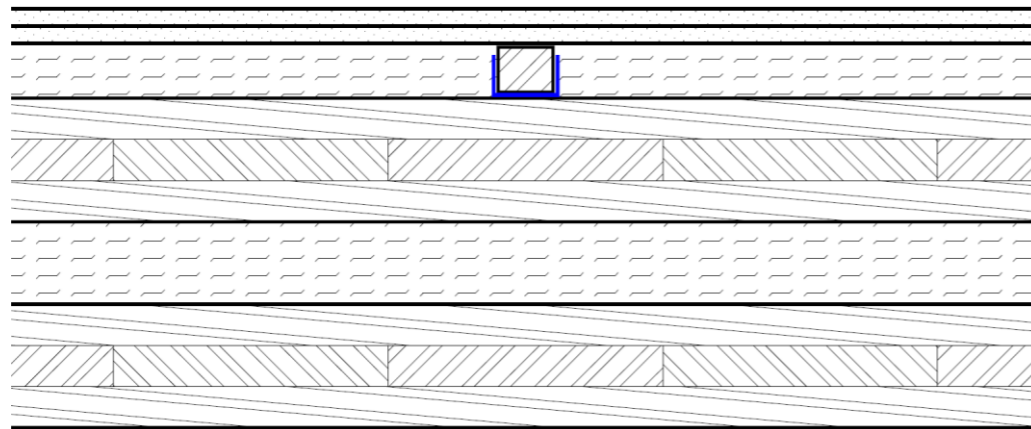
TRITTSCHALLSCHUTZ				
Prüfobjekt	Beurteilung			
	gemessen		erforderlich	+/-
	$L'_{n,w}$	$L'_{nT,w}$	$L'_{nT,w}$	
Geschoßdecke (Getzner Acoustic Floor Mat AFM21) Zimmer, Top 6, 2.Obergeschoß zu Zimmer, Top 4, 1.Obergeschoß <div style="display: inline-block; width: 20px; height: 10px; background-color: green; margin-left: 10px;"></div>	43 dB	44 dB	≤ 48 dB	+
Geschoßdecke (Regupol resist Gummigranulatmatte) Zimmer, Top 5, 1.Obergeschoß zu Zimmer, Top 3, Erdgeschoß <div style="display: inline-block; width: 20px; height: 10px; background-color: blue; margin-left: 10px;"></div>	44 dB	44 dB	≤ 48 dB	+
Geschoßdecke (Steicotherm, abgehängte Decke) Zimmer, Top 4, 1.Obergeschoß zu Zimmer, Top 2, Erdgeschoß <div style="display: inline-block; width: 20px; height: 10px; background-color: red; margin-left: 10px;"></div>	48 dB	48 dB	≤ 48 dB	+



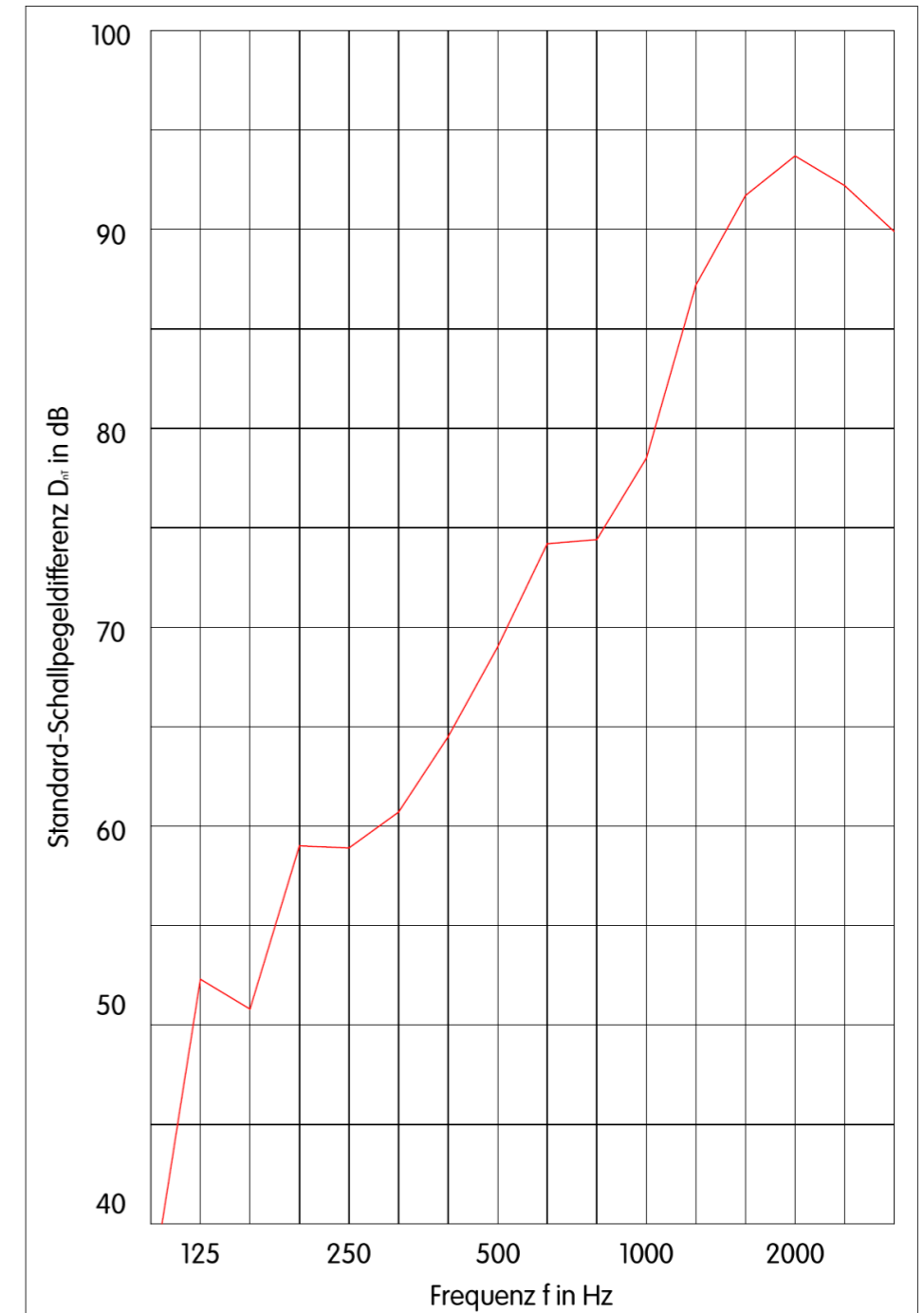


LUFTSCHALLSCHUTZ			
Prüfobjekt	Beurteilung		
	gemessen $D_{nT,w}$	erforderlich $D_{nT,w}$	+/-
Geschoßdecke (Getzner Acoustic Floor Mat AFM21) Zimmer, Top 6, 2.Obergeschoß zu Zimmer, Top 4, 1.Obergeschoß	65 dB	≥ 55 dB	+
Geschoßdecke (Regupol resist Gummigranulatmatte) Zimmer, Top 5, 1.Obergeschoß zu Zimmer, Top 3, Erdgeschoß	66 dB	≥ 55 dB	+
Geschoßdecke (Steicotherm, abgehängte Decke) Zimmer, Top 4, 1.Obergeschoß zu Zimmer, Top 2, Erdgeschoß	61 dB	≥ 55 dB	+

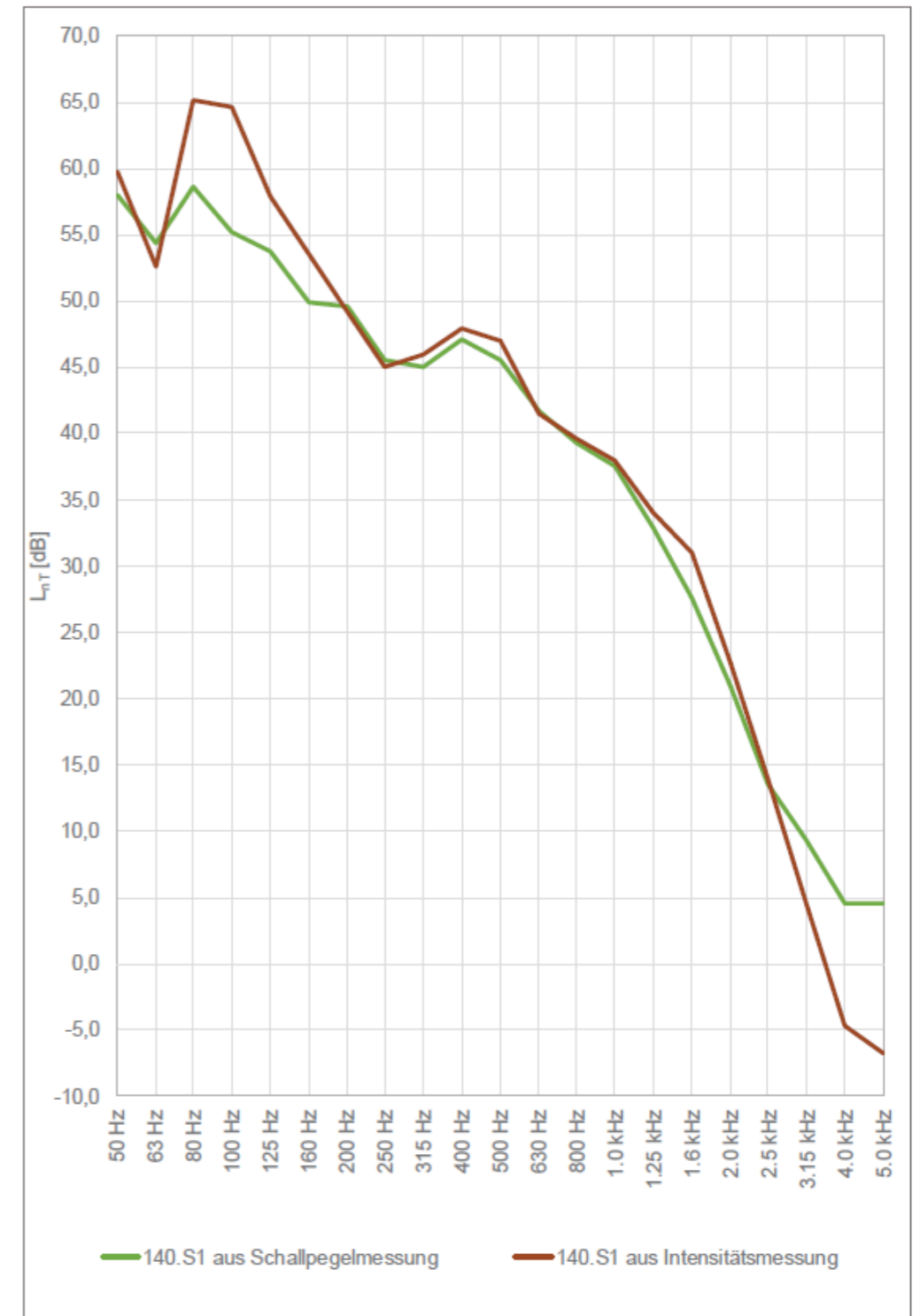




LUFTSCHALLSCHUTZ			
Prüfobjekt	Beurteilung		
	gemessen $D_{nT,w}$	erforderlich $D_{nT,w}$	+/-
Wohnungstrennwand Zimmer, Top 4, 1.Obergeschoß zu Zimmer, Top 5, 1.Obergeschoß	69 dB	≥ 55 dB	+



Vergleich Trittschallpegel-Messung Schalldruck - Schallintensität







Vielen Dank für Ihre Aufmerksamkeit!

