

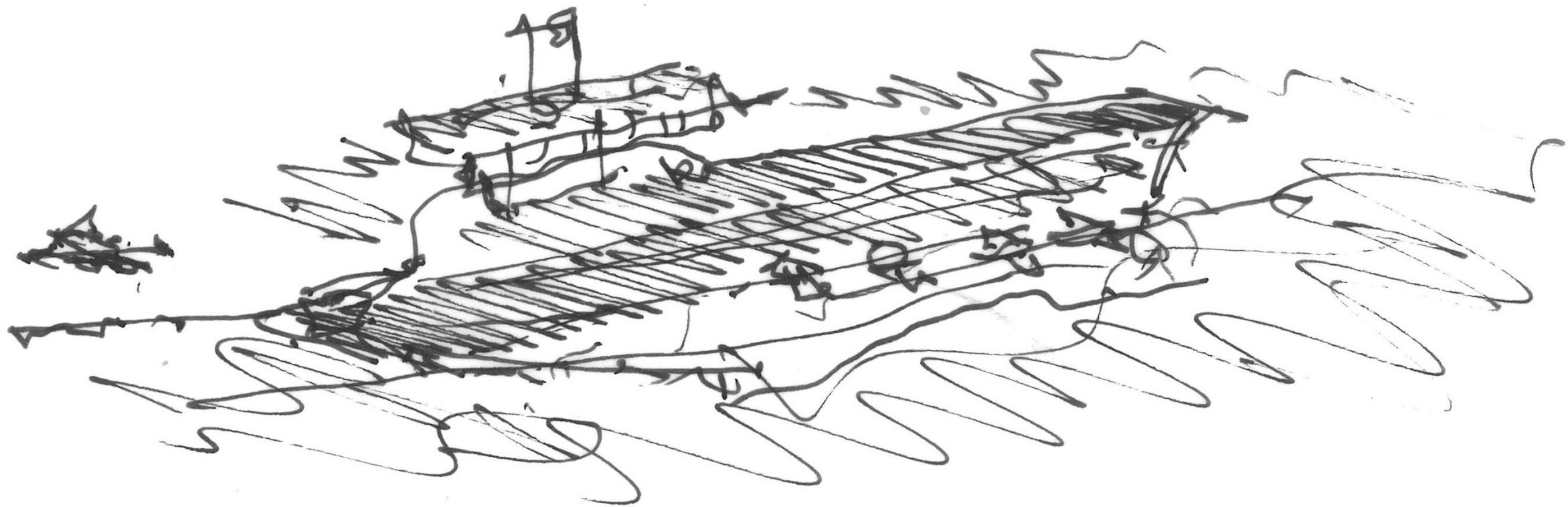
DER NORMGERECHTE  
HAUSVERSTAND  
ODER  
MEHRGESCHOSSIGER  
HOLZBAU ALS WERTIGKEIT

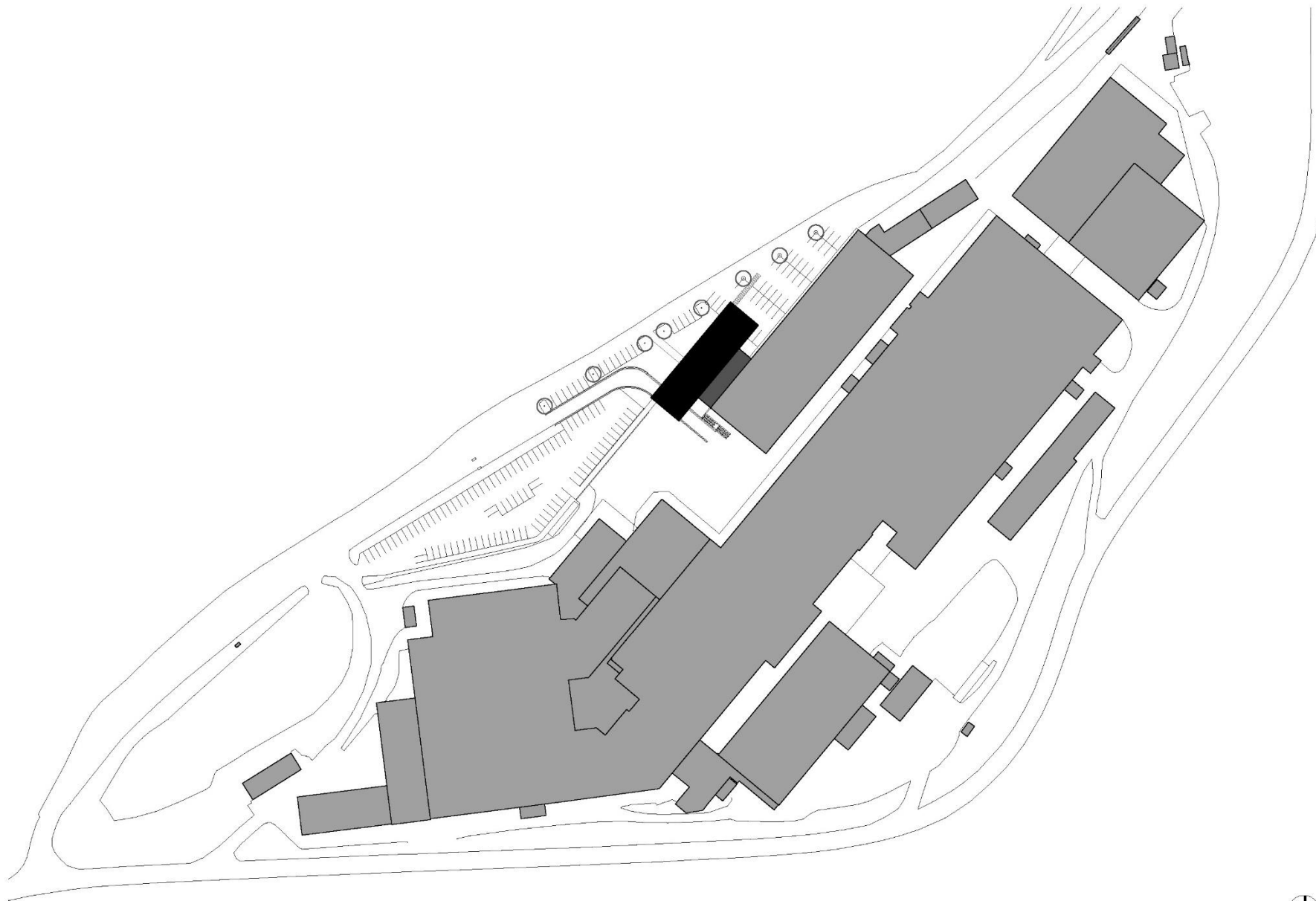
ARCHITEKTEN LUGER & MAUL, WELS

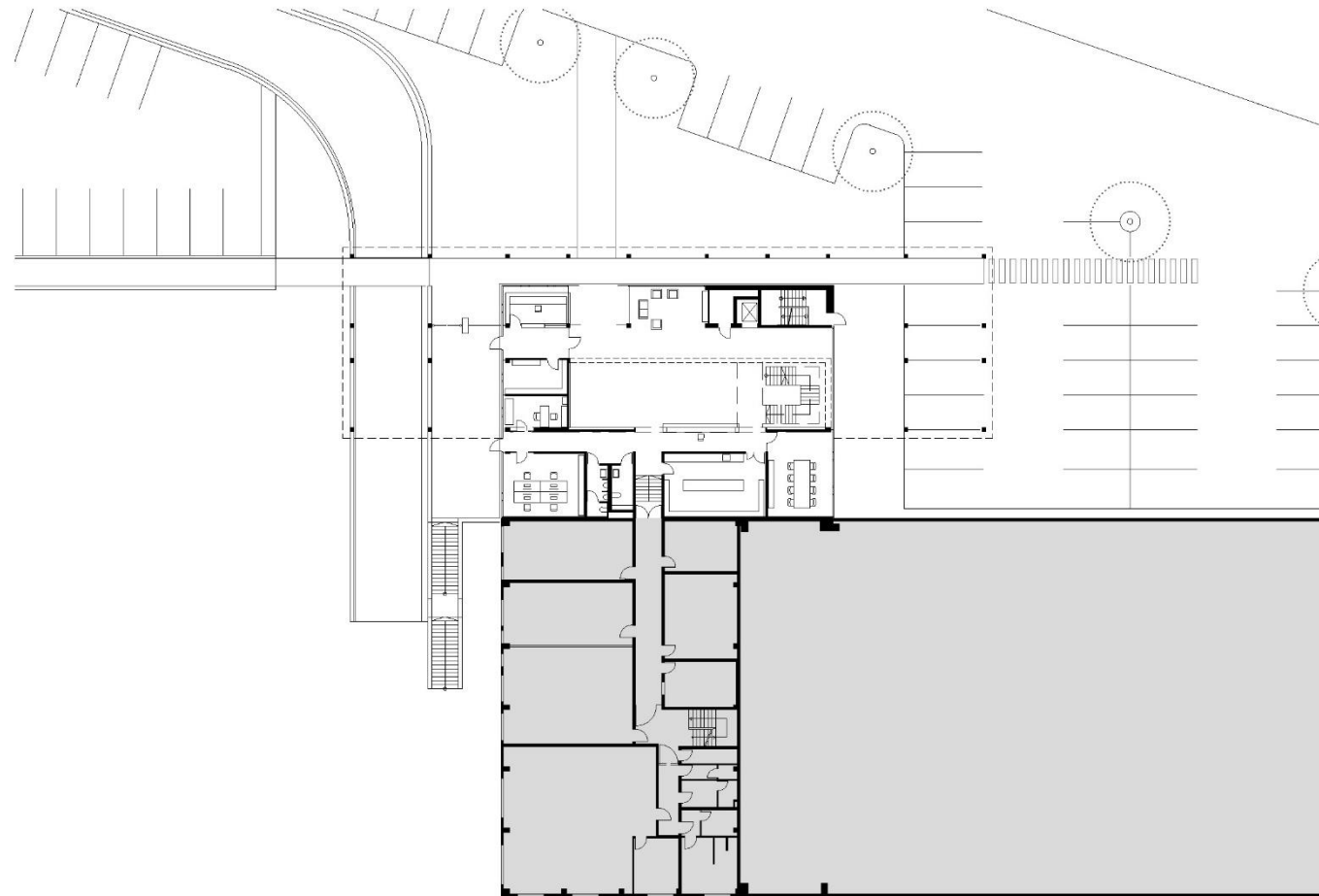


The image shows a close-up of a building's exterior. The majority of the frame is filled with dark, horizontal, ribbed slats that create a strong rhythmic pattern. On the right side, a window with a dark frame is visible, looking out onto a blue sky with a few small, light-colored clouds. Below the window, a balcony railing with vertical bars is partially visible. The overall lighting is somewhat dim, suggesting an overcast day or a shaded area.

BÜROHAUS GEORG FISCHER, ALTENMARKT

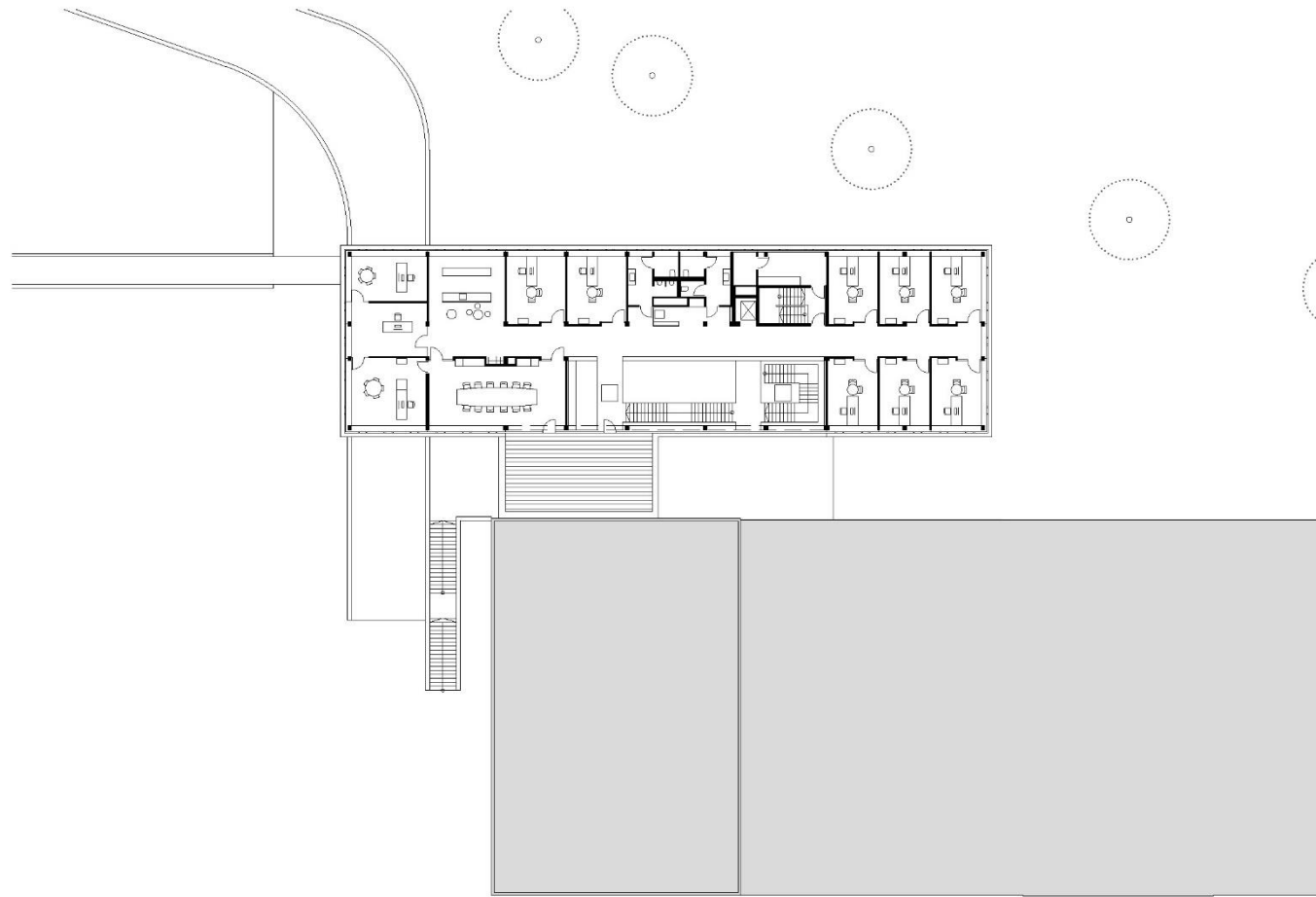






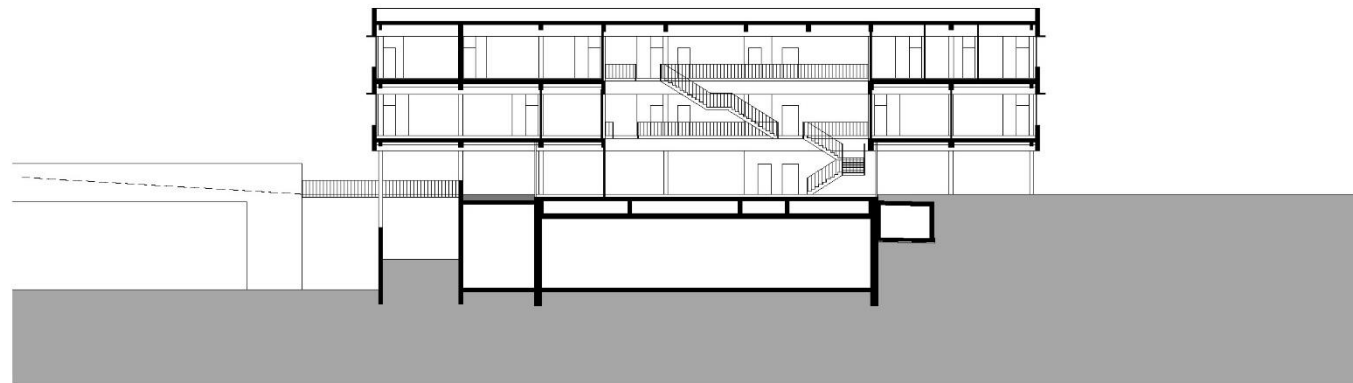
EG 1:500



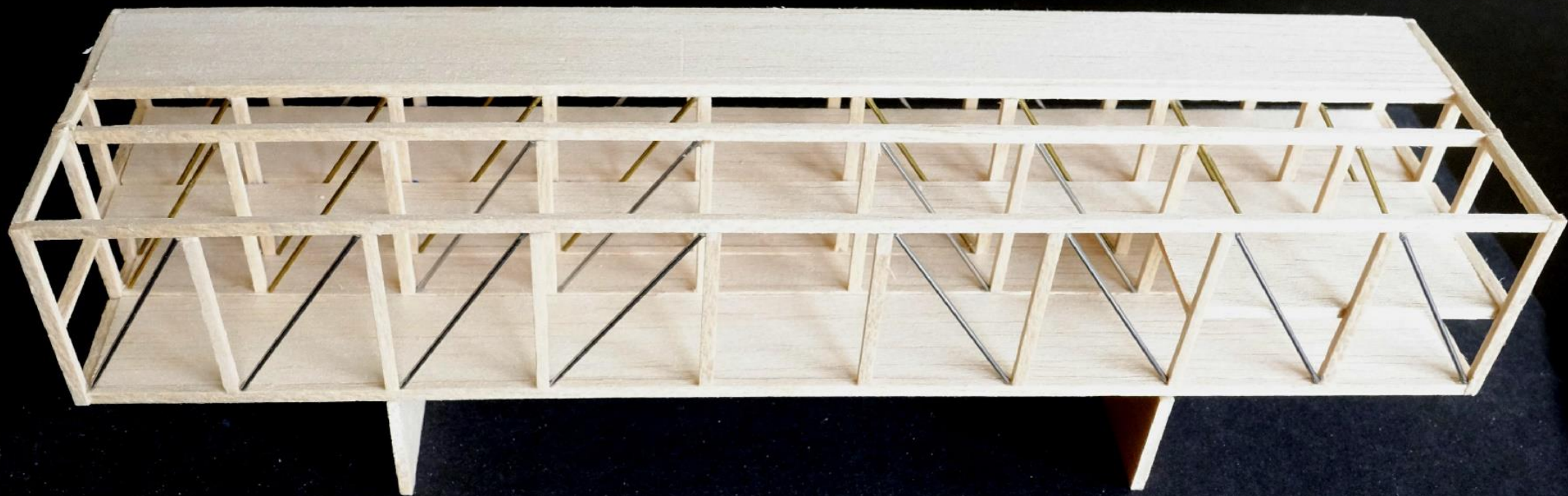


2.OG 1:500





SCHNITT 1:500



STRUKTURMODELL













+GF+

+GF+

+GF+



+GF+















+GF+

+GF+

Key figures

2017

€160

52

100

100

100

100

100

100

100

100

100

100

100

100



+GF+

Kreuzzahlen  
2017

4190

382





+GF+

GF Casting Solutions  
Altenwald

+GF+

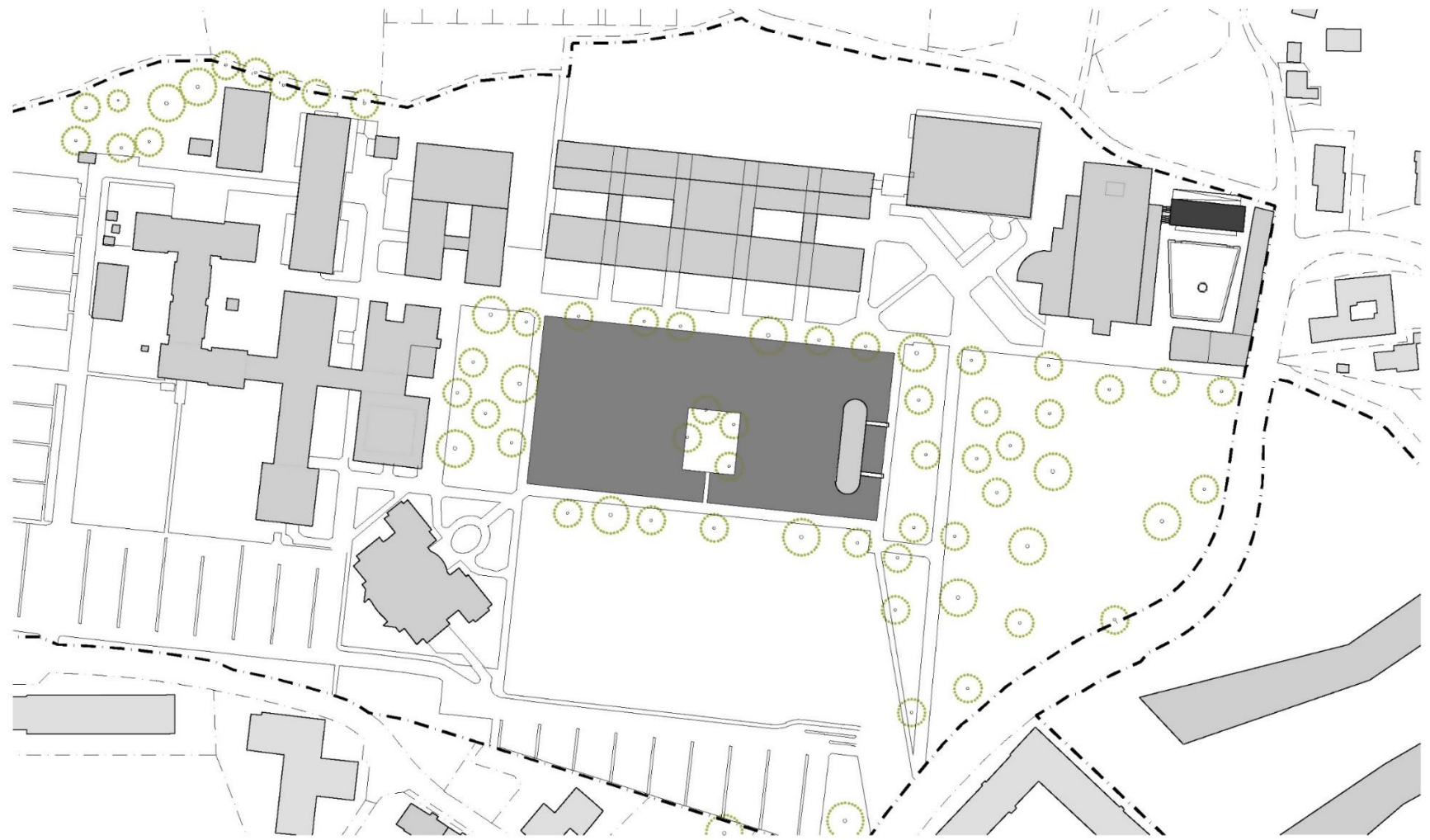
+GF+  
Kennzahlen  
2017

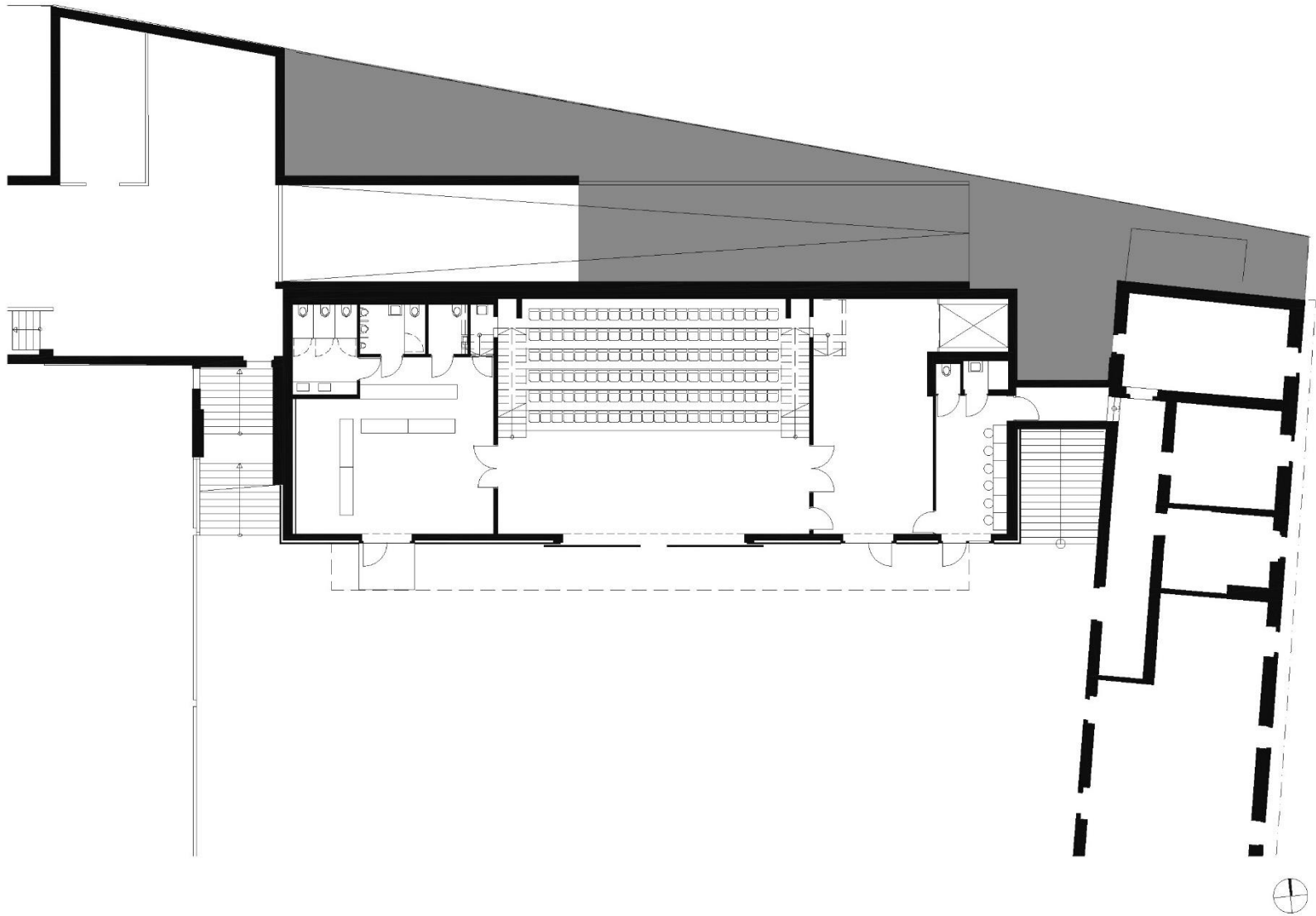
4 150
362
258
1835

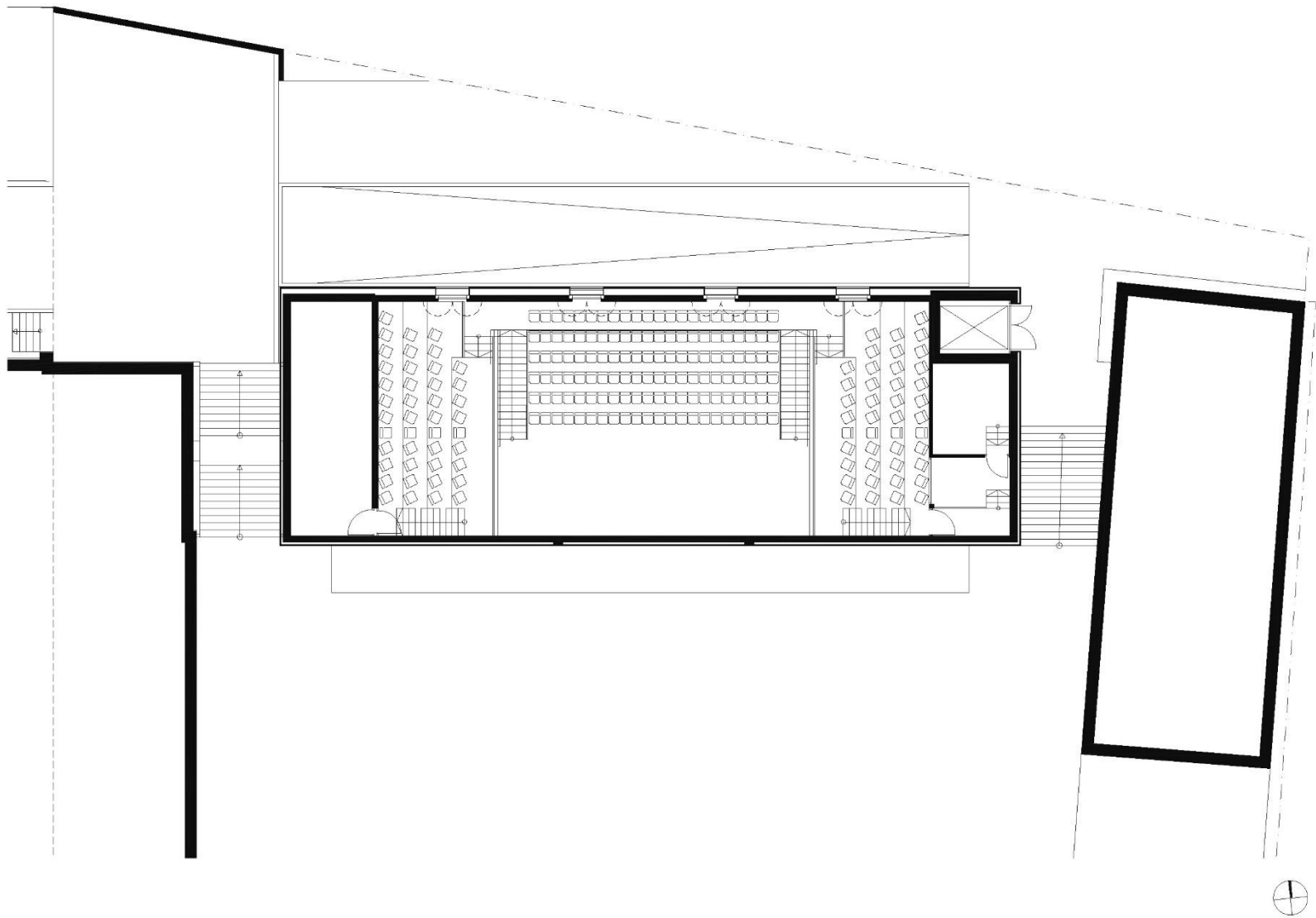


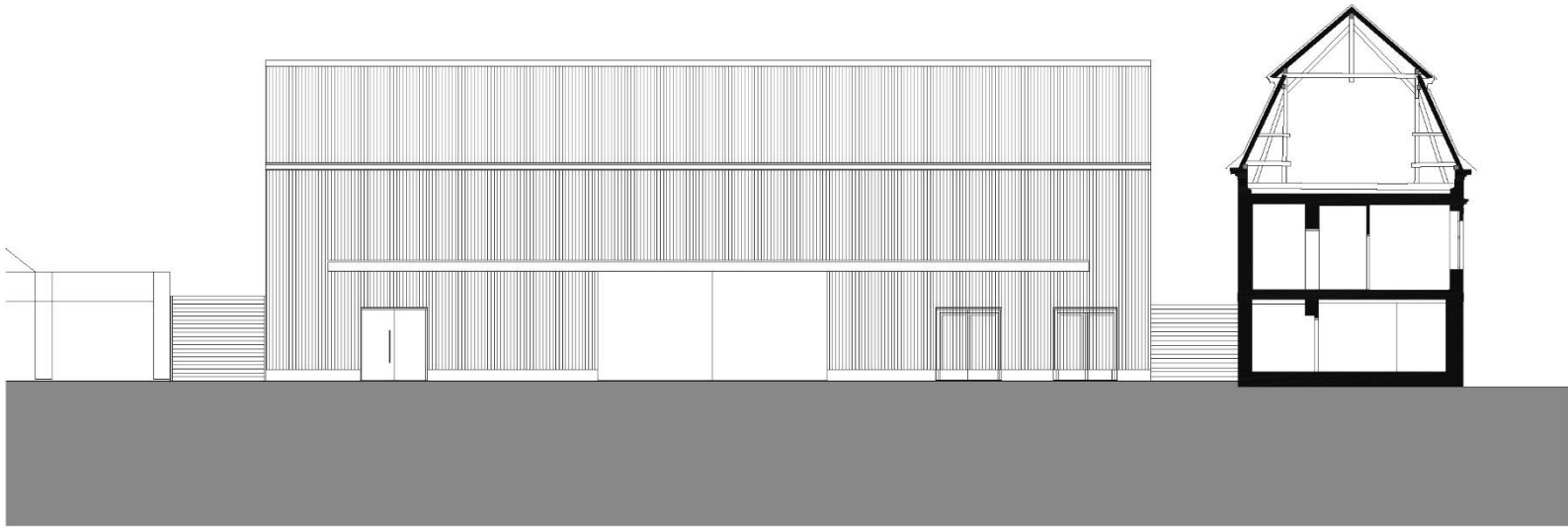
ZIRKUS DES WISSENS - JKU, LINZ

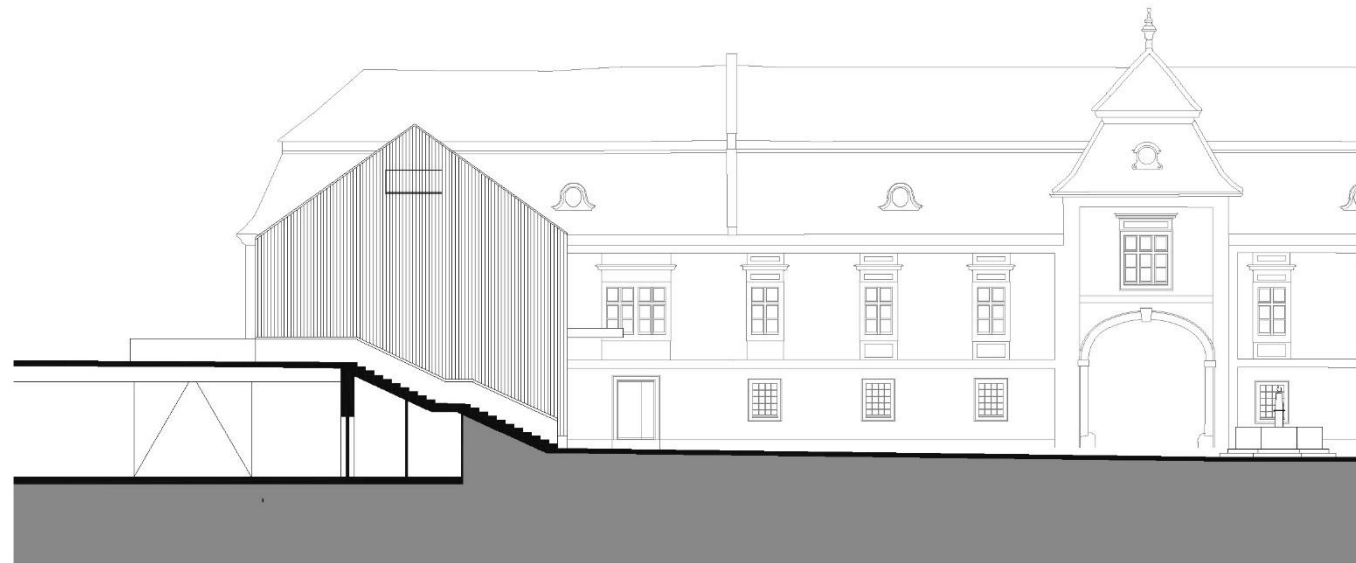


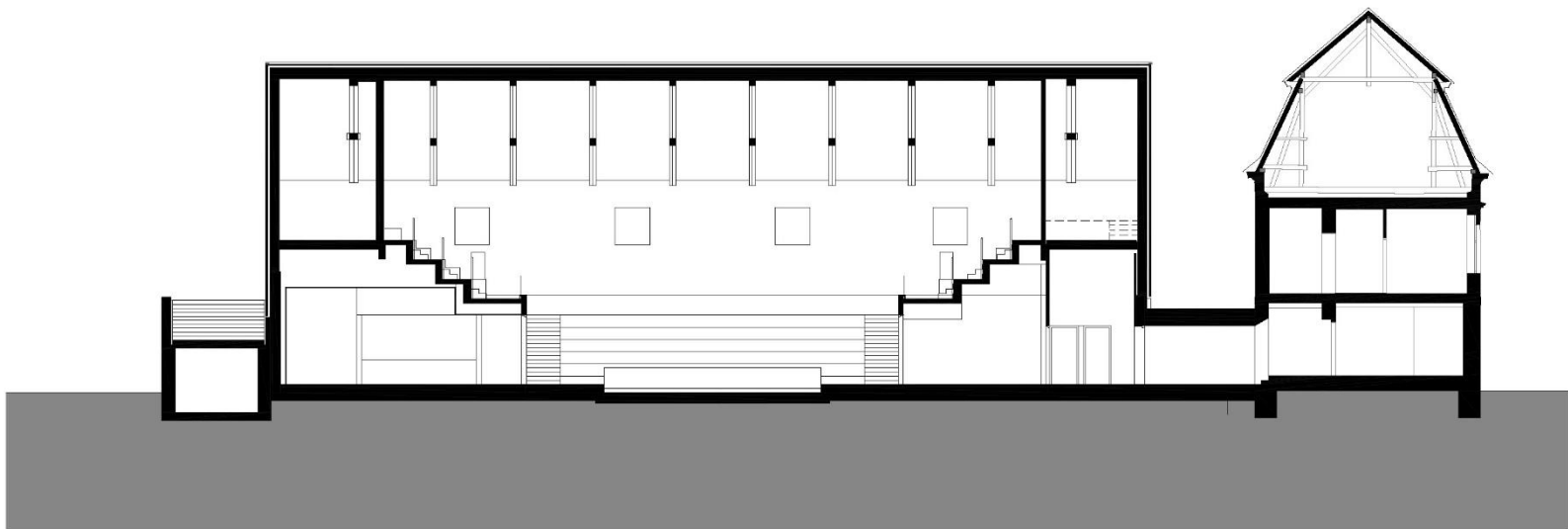


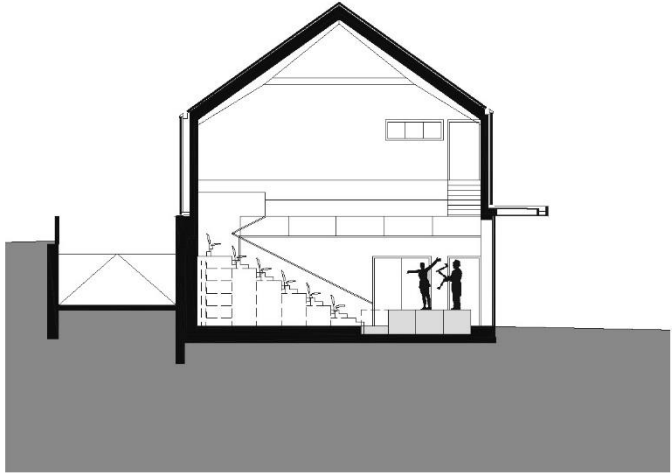


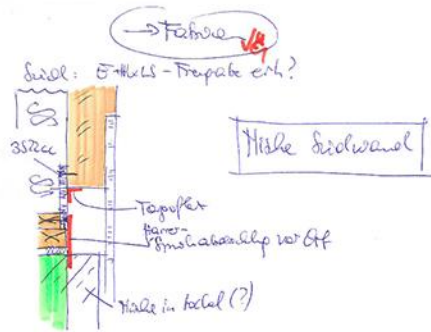




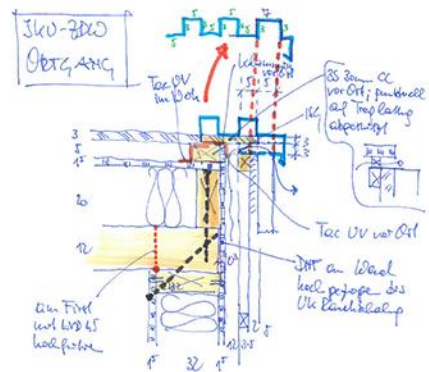
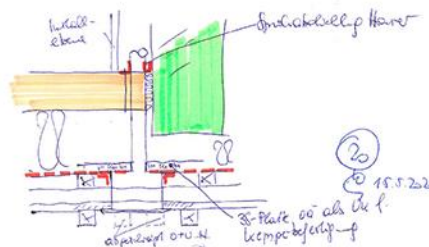






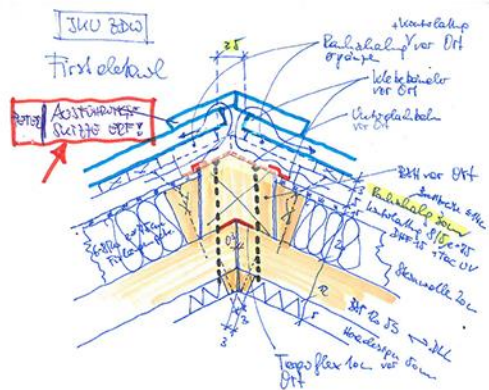


Siedel Kerper:



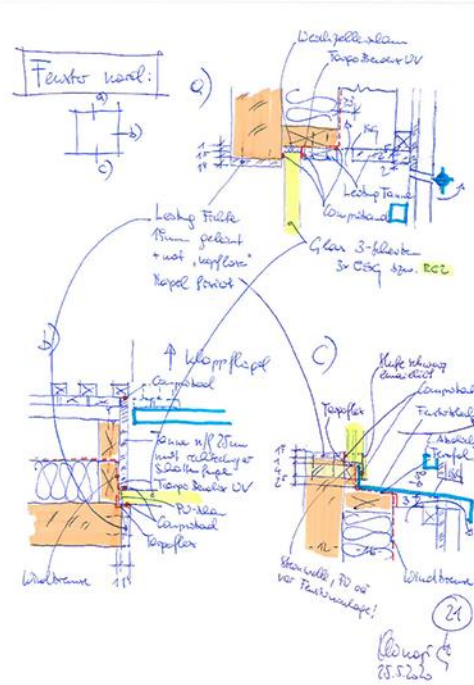
LM 12.3

4 23.2.20



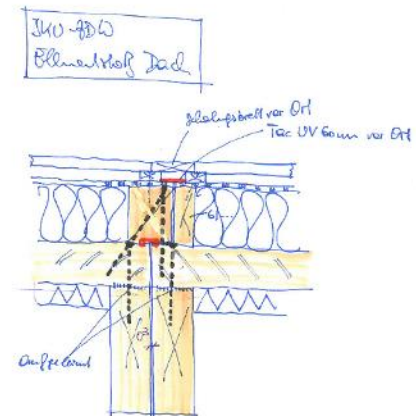
LM 12.3

1 23.2.20



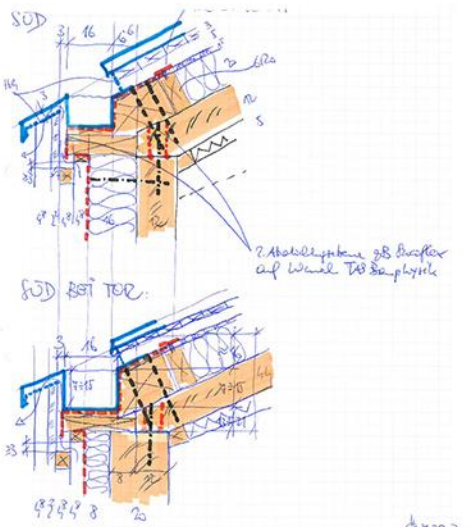
LM 12.3

3 23.2.20



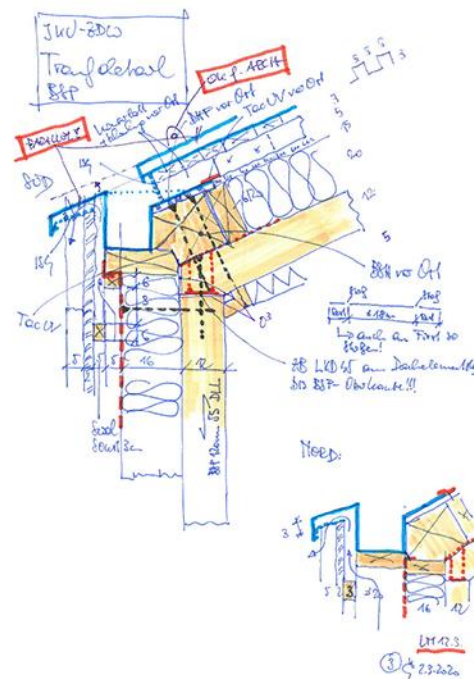
LM 12.3

2 23.2.20



LM 12.3

3a



LM 12.3

3a 23.2.20





















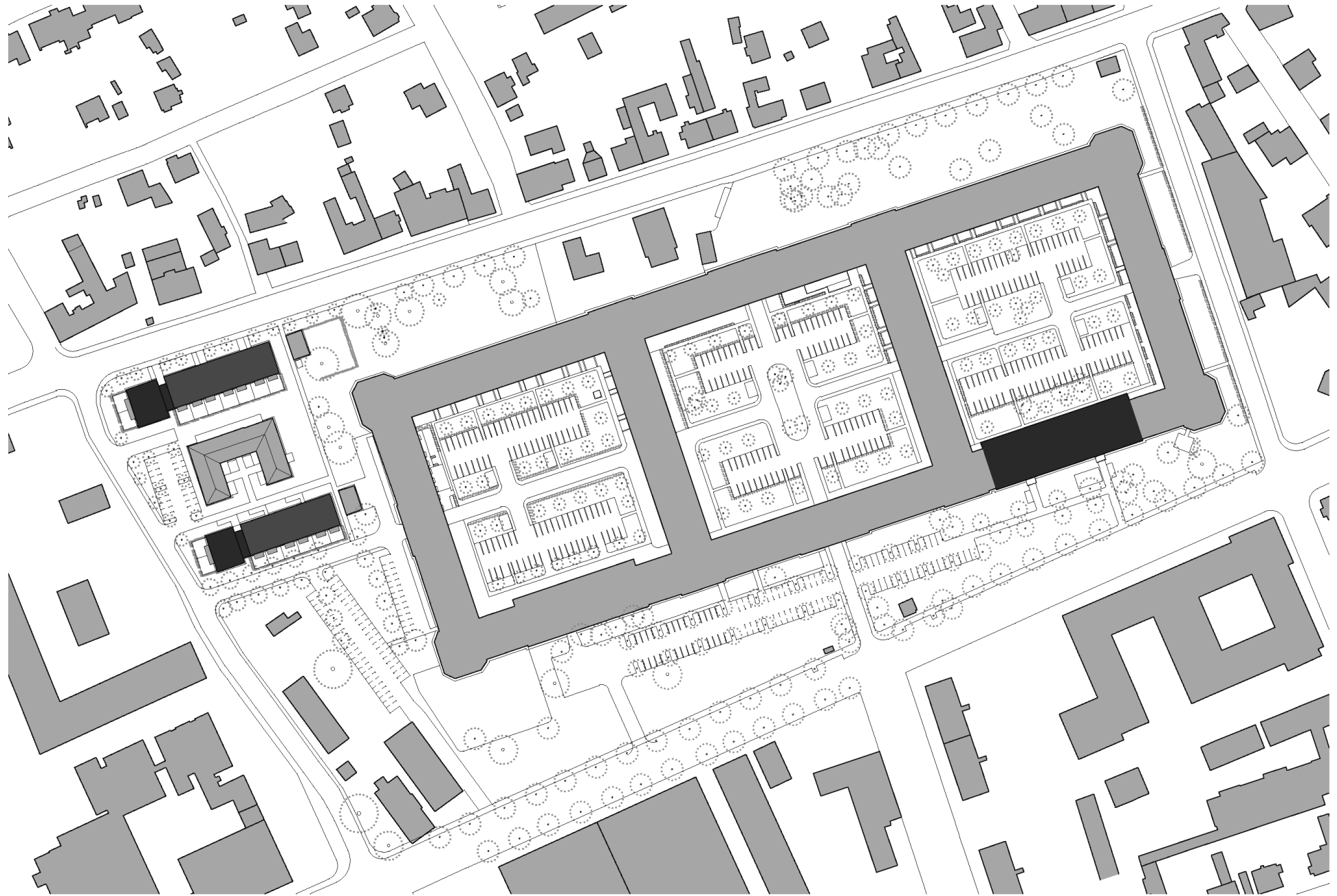


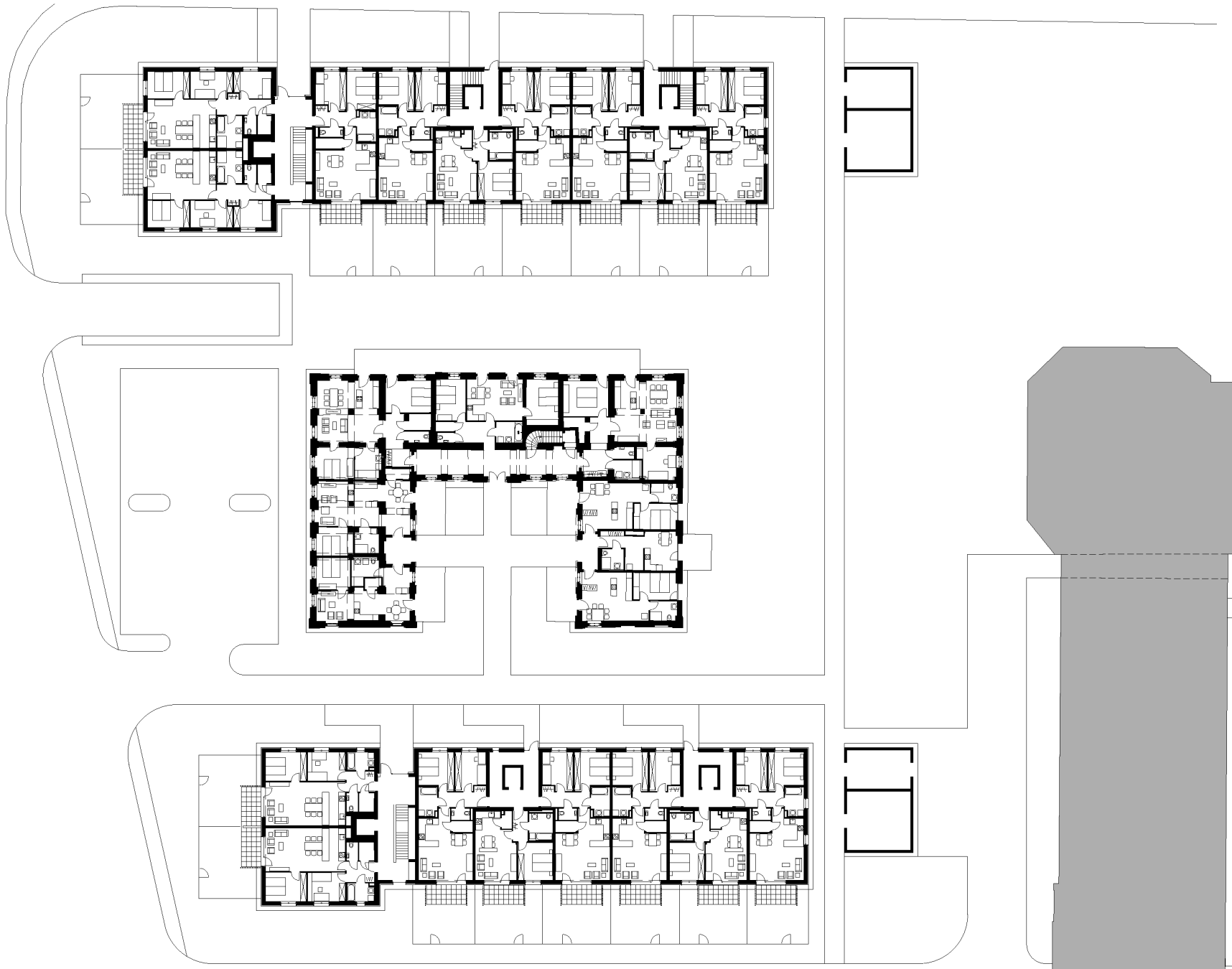




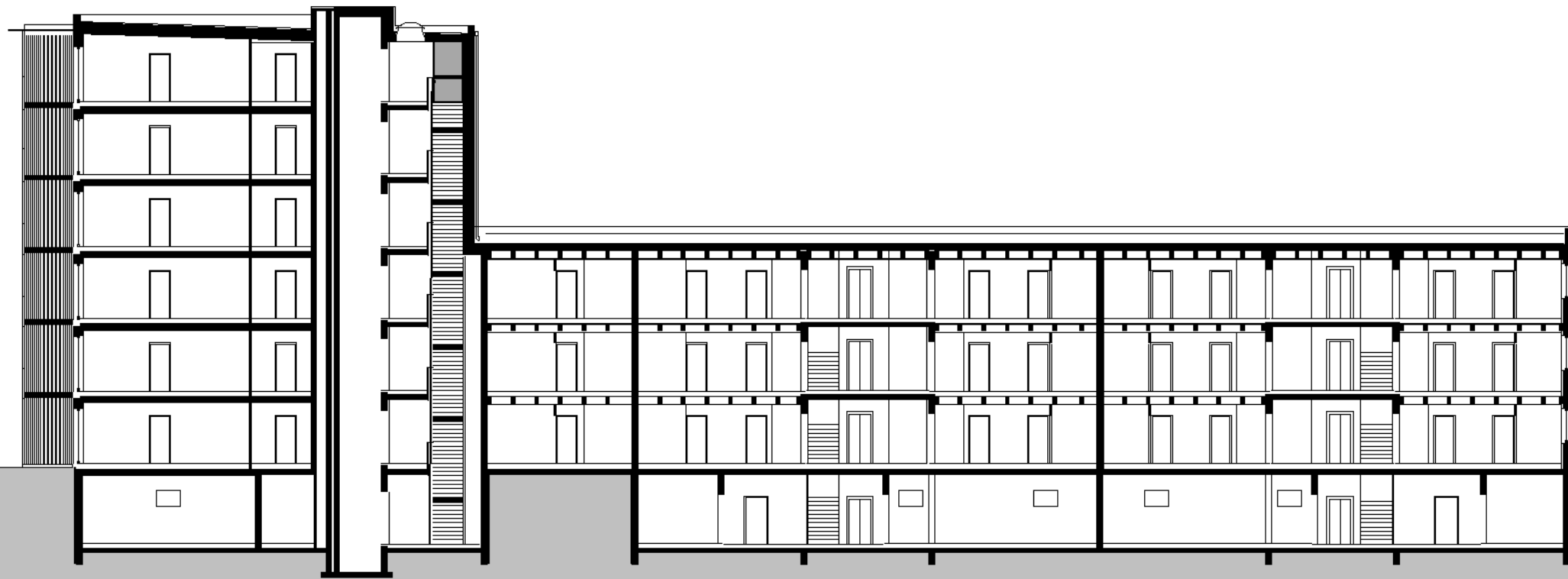
DRAGONERHÖFE, WELS





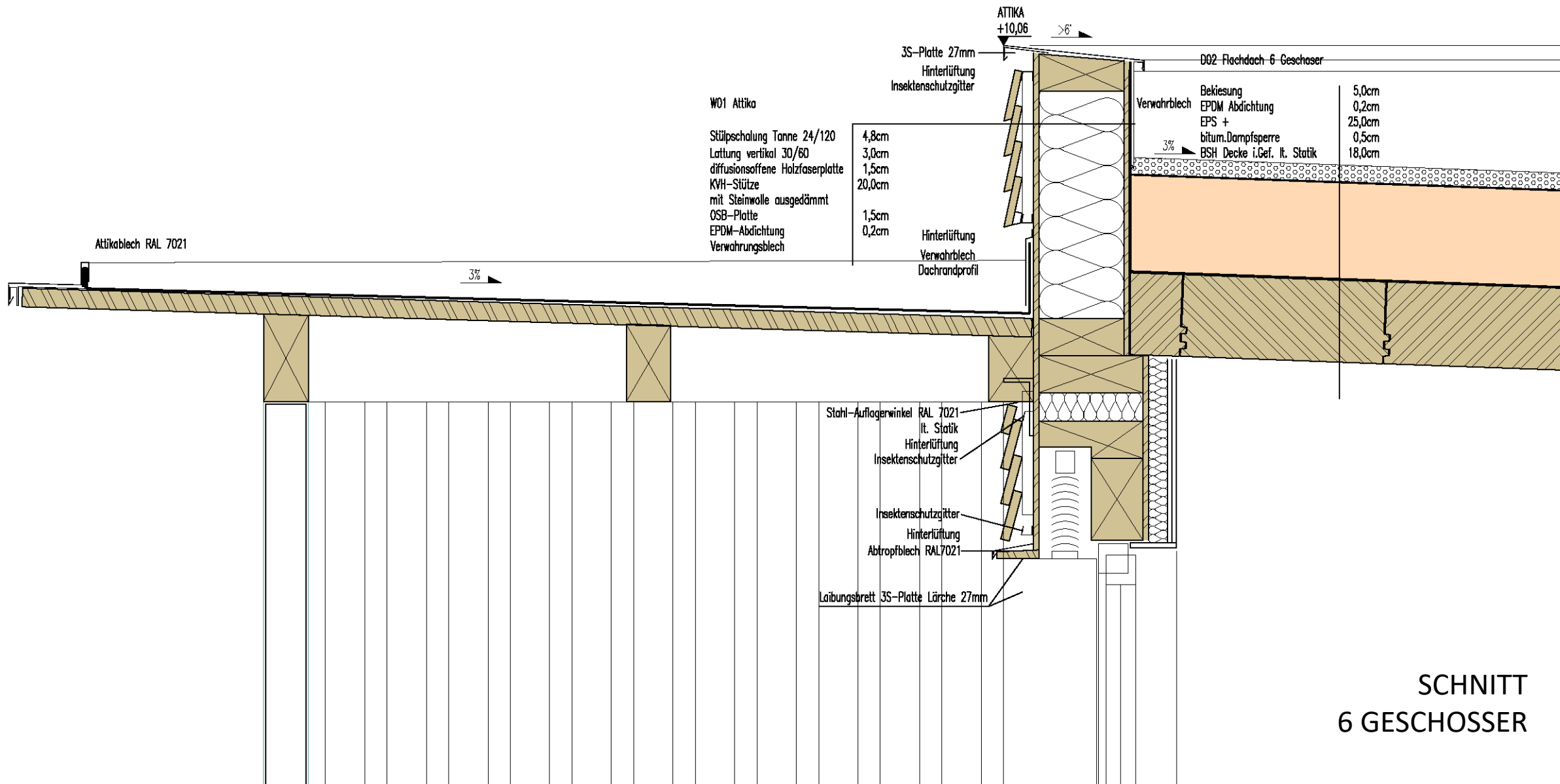












W01 Attika

Stülpchalung Tanne 24/120  
 Lattung vertikal 30/60  
 diffusionsoffene Holzfaserplatte  
 KVH-Stütze  
 mit Steinwolle ausgedämmt  
 OSB-Platte  
 EPDM-Abdichtung  
 Verwahrungsblech

4,8cm  
 3,0cm  
 1,5cm  
 20,0cm  
 1,5cm  
 0,2cm

3S-Platte 27mm  
 Hinterlüftung  
 Insektenschutzgitter

Hinterlüftung  
 Verwahrblech  
 Dachrandprofil

ATTIKA  
 +10,06

>6'

D02 Flachdach 6-Geschosser

Bekiesung	5,0cm
EPDM Abdichtung	0,2cm
EPS + bitum. Dampfsperre	25,0cm
BSH Decke i.Gef. lt. Statik	18,0cm

Attikablech RAL 7021

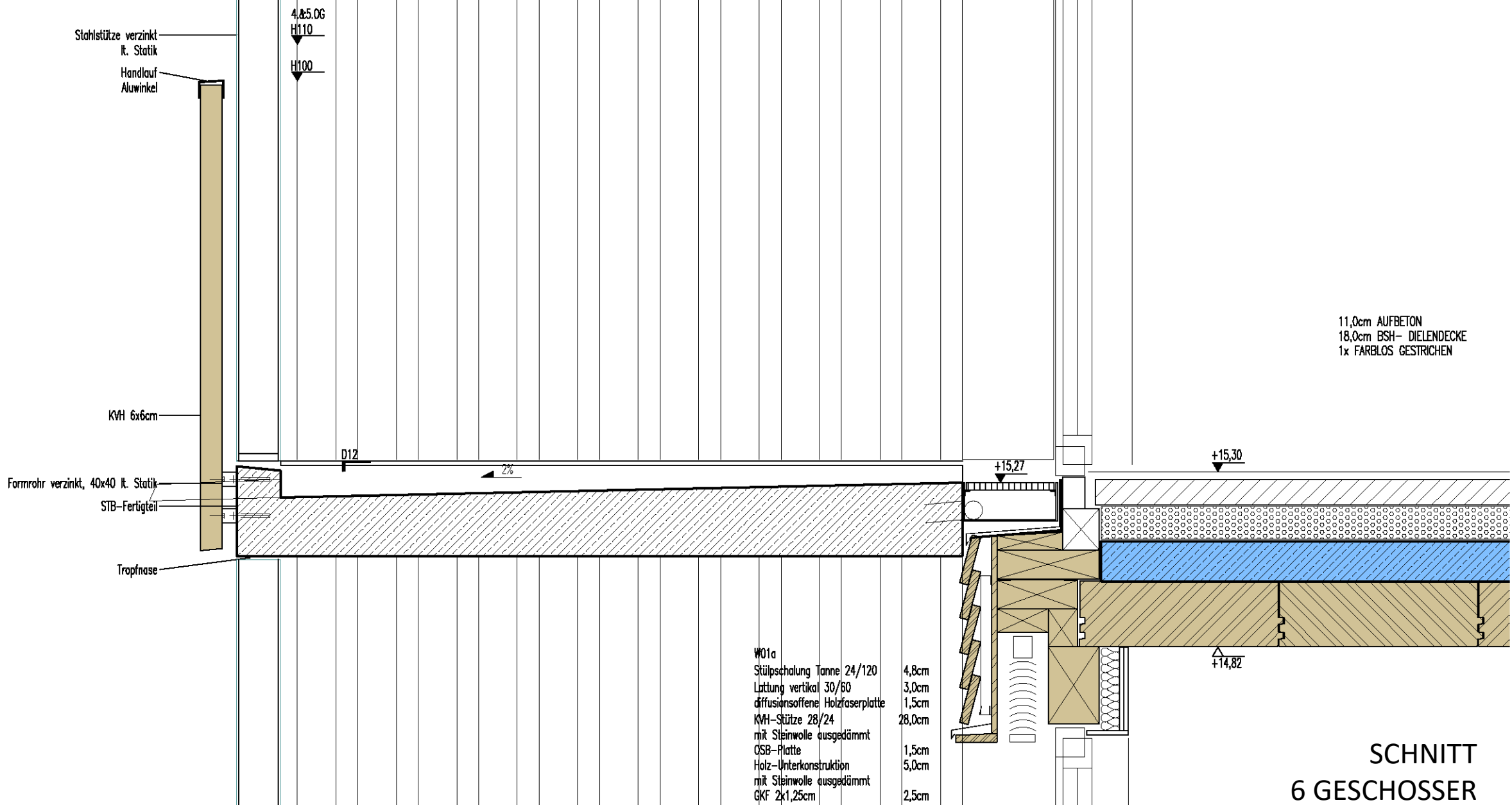
3%

Stahl-Auflagerwinkel RAL 7021  
 lt. Statik  
 Hinterlüftung  
 Insektenschutzgitter

Insektenschutzgitter  
 Hinterlüftung  
 Abtropfblech RAL 7021

Laibungsbrett 3S-Platte Lärche 27mm

SCHNITT  
 6 GESCHOSSER



Stahlstütze verzinkt  
lt. Statik  
Handlauf  
Aluwinkel

4,85,06  
H110  
H100

KVH 6x6cm

Formrohr verzinkt, 40x40 lt. Statik  
STB-Fertigteil

Tropfnase

D12

2%

+15,27

+15,30

11,0cm AUFBETON  
18,0cm BSH- DIELENDECKE  
1x FARBLOS GESTRICHEN

W01a  
Stülpeschalung Tanne 24/120 4,8cm  
Lattung vertikal 30/60 3,0cm  
diffusionsoffene Holzfaserplatte 1,5cm  
KVH-Stütze 28/24 28,0cm  
mit Steinwolle ausgedämmt  
CSB-Platte 1,5cm  
Holz-Unterkonstruktion 5,0cm  
mit Steinwolle ausgedämmt  
GKF 2x1,25cm 2,5cm

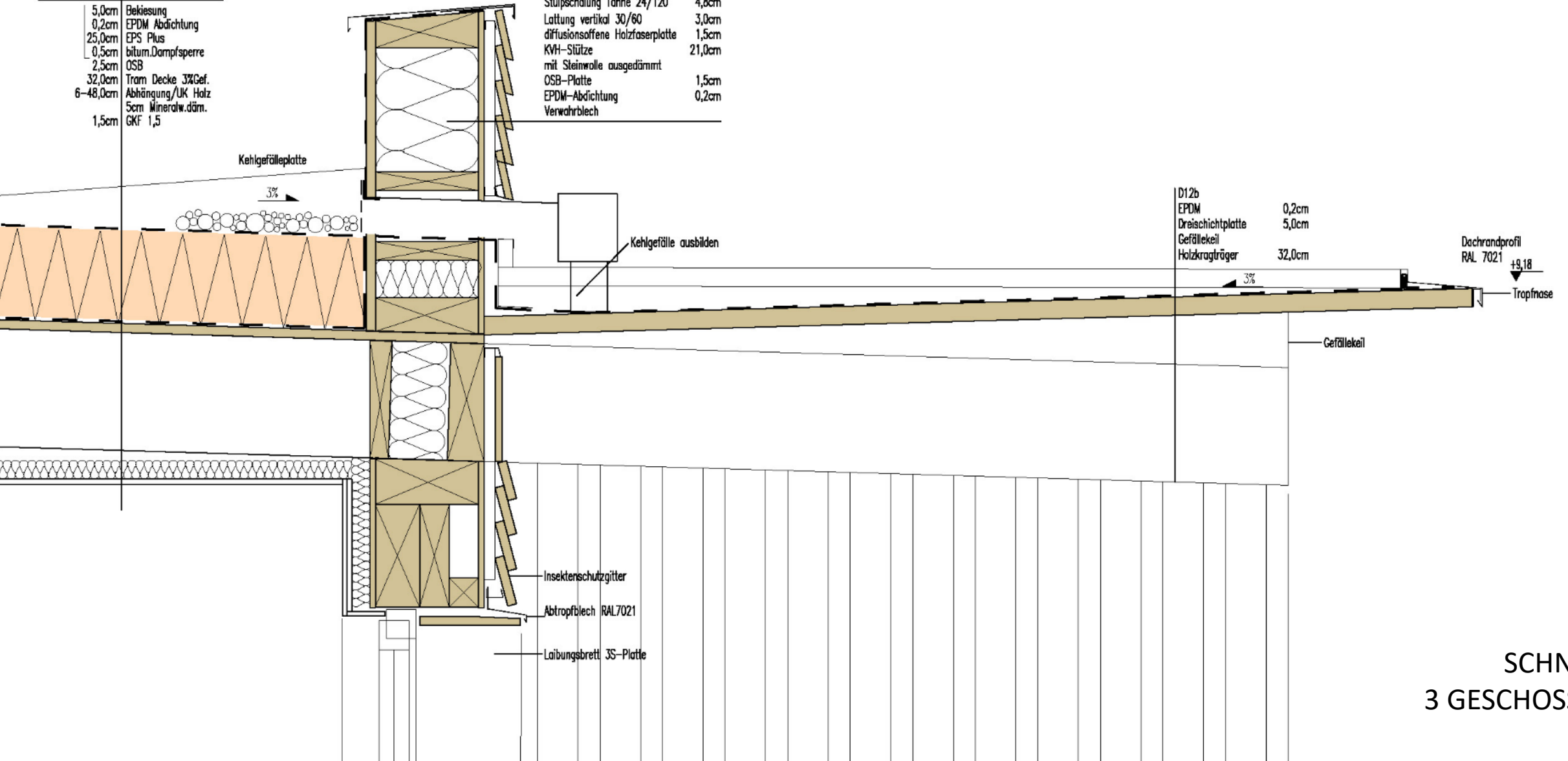
+14,82

SCHNITT  
6 GESCHOSSER

D 04	R 30	Flachdach
	31,0cm	3-Ges.

5,0cm	Bekiesung
0,2cm	EPDM Abdichtung
25,0cm	EPS Plus
0,5cm	bitum.Dampfsperre
2,5cm	OSB
32,0cm	Tram Decke 3%Gef.
6-48,0cm	Abhängung/UK Holz
5cm	Mineralw.däm.
1,5cm	GKF 1,5

Stülp Schalung Tanne 24/120	4,8cm
Lattung vertikal 30/60	3,0cm
diffusionsoffene Holzfaserplatte	1,5cm
KVH-Stütze mit Steinwolle ausgedämmt	21,0cm
OSB-Platte	1,5cm
EPDM-Abdichtung	0,2cm
Verwehrblech	



SCHNITT  
3 GESCHOSSER

D 03	REI 60	Tramdecke
	19,6 cm	3-Ges.

- 1,5cm Fliesen/Parkett
- 7,0cm Heizestrich
- cm Folie
- 2,0cm TDP25/20 mineral. dyn.S. <10MN/m<sup>3</sup>
- 9,0cm Schüttung lose Rieselschutz
- cm OSB
- 2,5cm Tram/15cm Dämm.
- 3,0cm Federschiene
- 3,0cm 2x GKF 1,5

- D12 STB-Fertigteil 18,0-21,5cm
- Elastomer 1,0cm
- Holztragträger 28/14 28,0cm

Fassadenrinne

2%

+6,19

Niro-Handlauf  
Stahlwinkel

+6,19

KVH 6x6cm

Abstandhalter

+5,91

+5,62

W01a

- Sitüpschalung Tanne 24/120 4,8cm
- Lattung vertikal 30/60 3,0cm
- diffusionsoffene Holzfaserplatte 1,5cm
- KVH-Stütze 28/24 28,0cm
- mit Steinwolle ausgedämmt
- OSB-Platte 1,5cm
- Holz-Unterkonstruktion 5,0cm
- mit Steinwolle ausgedämmt
- GKF 2x1,25cm 2,5cm

SCHNITT  
3 GESCHOSSER













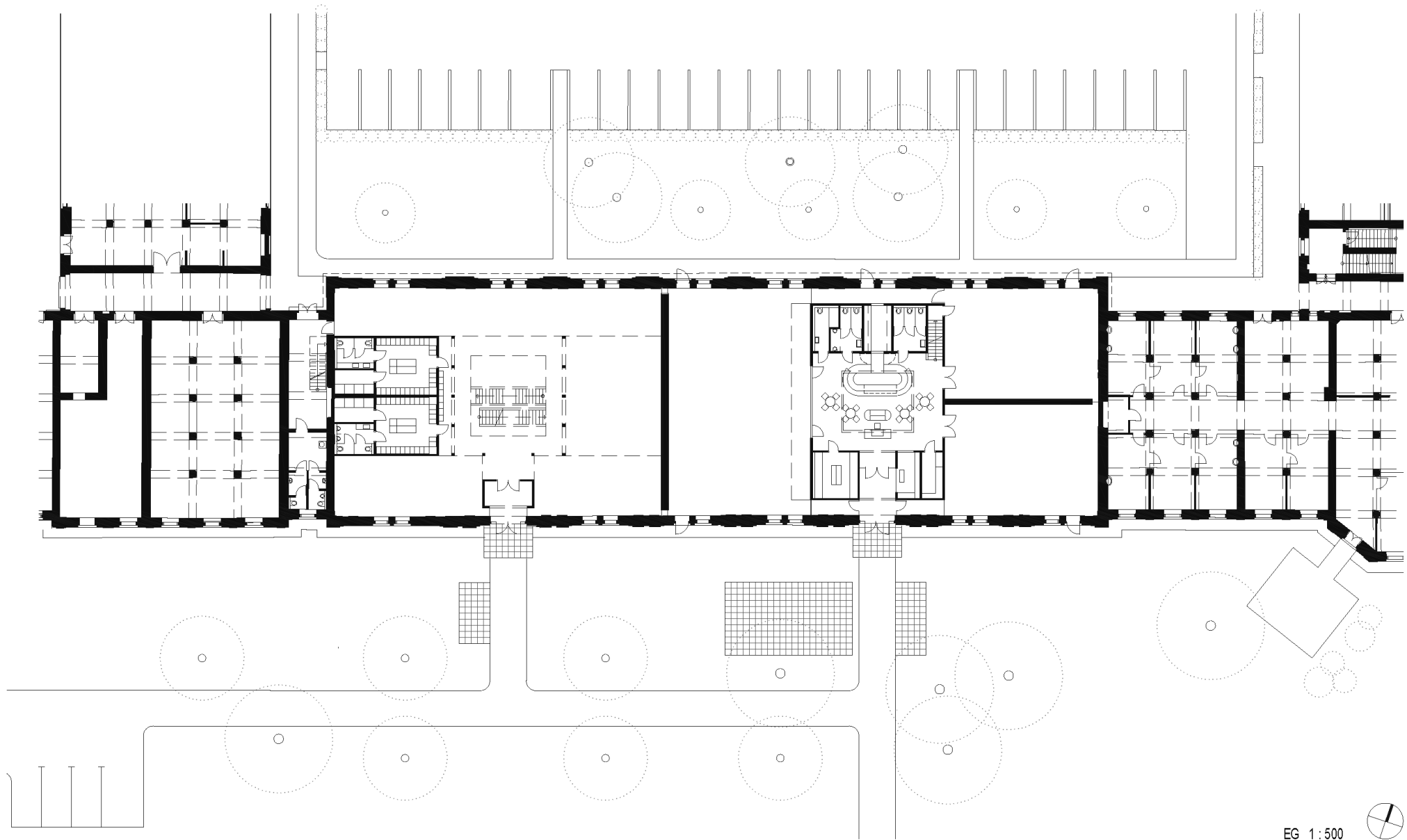




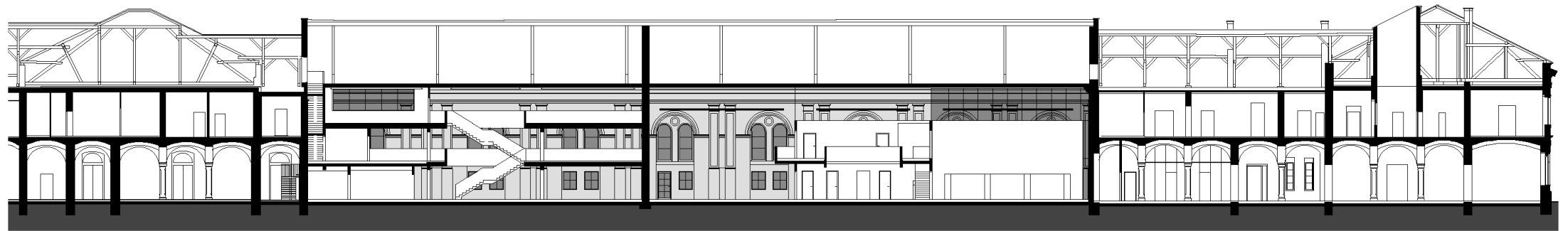




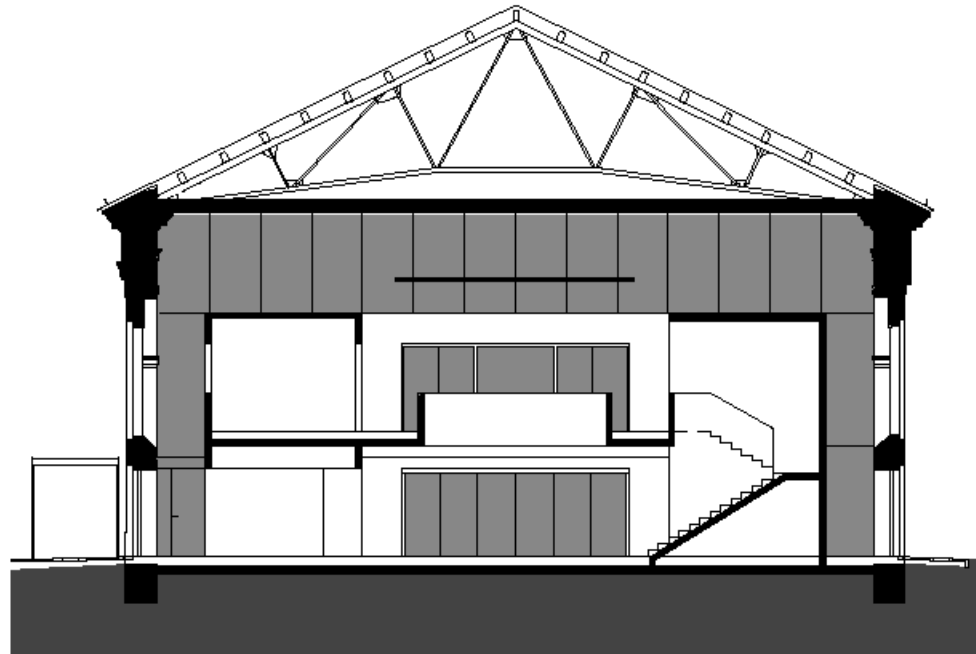








LÄNGSSCHNITT 1 : 500



QUERSCHNITT 1 : 500



















urban



classic



VIELEN DANK FÜR IHRE AUFMERKSAMKEIT

ARCHITEKTEN LUGER & MAUL  
BAUERNSTR. 8, 4600 WELS  
07242 / 43 9 81      [office@luger-maul.at](mailto:office@luger-maul.at)